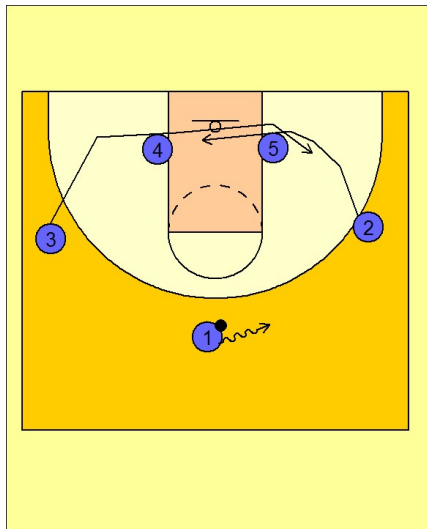


Michigan state

Set play (23)

1

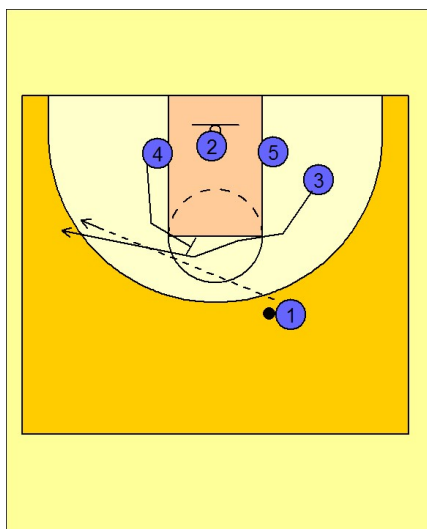


Michigan State Set Play vs. Man

#2 and #3 start their interchange action under the basket while #1 takes the ball to the right side of the floor.

#2 stops in the middle of the lane.

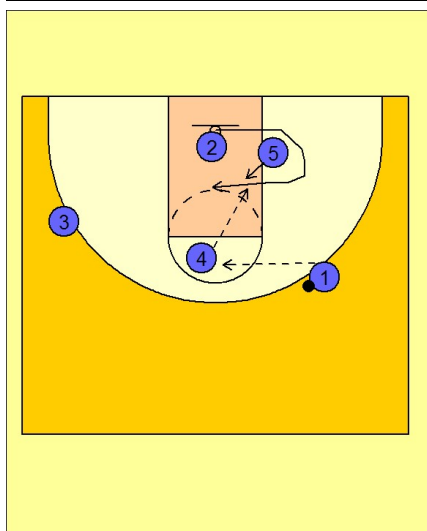
2



Michigan State Set Play vs. Man

As #3 comes off the low post man #5 he curl around and uses a flare screen from #4 on top looking for an open jumper on the left wing.

3



Michigan State Set Play vs. Man

If #3 is not open, #2 changes direction and comes curling off of #5 in the post. This action will force #5's man to help on the curl which will give #5 great post position as he steps in the lane looking for the post entry pass from #4.