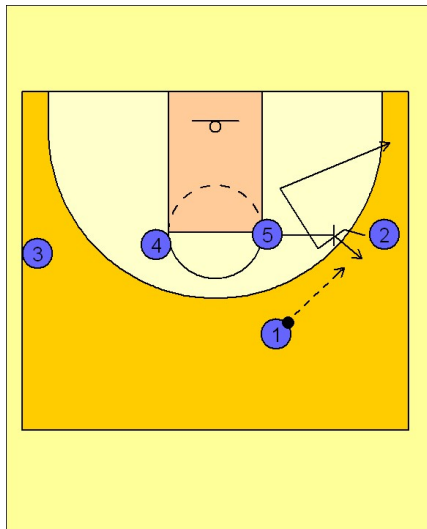


Michigan state

Set play (6)

1

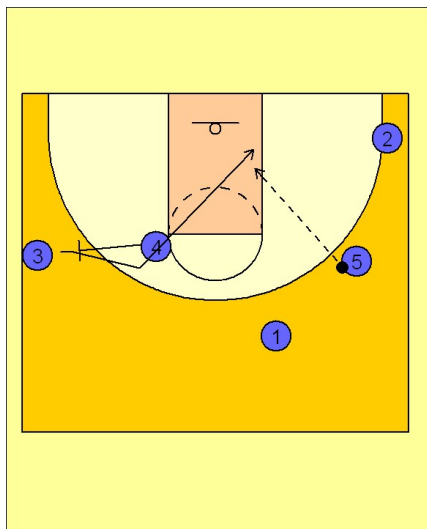
Michigan State Set Play



(#5) and (#2) set screens for each other, it could be a back screen from (#5) or a cross screen from (#2), it does not matter here. After the screening action, (#2) may look for a break to the basket for a quick layup. If it is not there, he breaks to the ball side corner. (#5) then pops out to the wing for the entry pass.

2

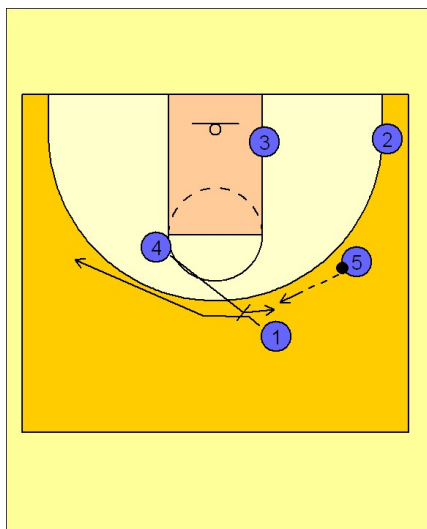
Michigan State Set Play



On the pass to (#5), (#4) steps out and sets a back screen on (#3's) defender, looking for a diagonal cut to the basket for a pass and layup from (#5).

3

Michigan State Set Play



After (#4) sets the screen on (#3), he immediately comes back to set a back screen on (#1's) defender, and then pops out for the pass from (#5).

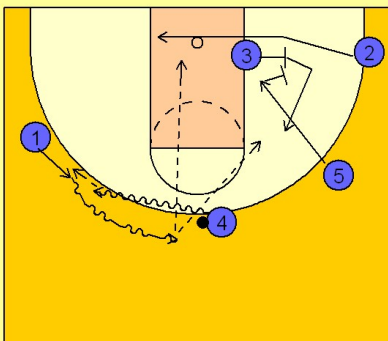
(#1) fades to the opposite wing.

Michigan state

Set play (6)

4

Michigan State Set Play



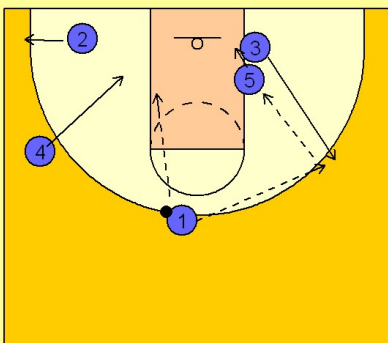
(#4) then executes a dribble hand off with (#1).

(#3 and #5) set a double back screen for (#2).

(#1) comes off the hand off from (#4) hard looking to penetrate from the top or hit the cutting (#2), or the (#3) man popping out after setting the screen, or (#4) man stepping out for a three point shot if they didn't execute the defensive assignments properly on the dribble hand off.

5

Michigan State Set Play



(#2) clears the lane if he does not receive the pass, while (#4 and #5) shape up in the post looking for a post pass from (#1) or (#3).