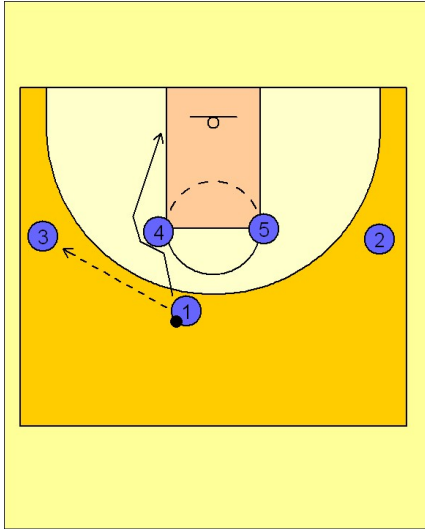


Michigan state Set play (8)

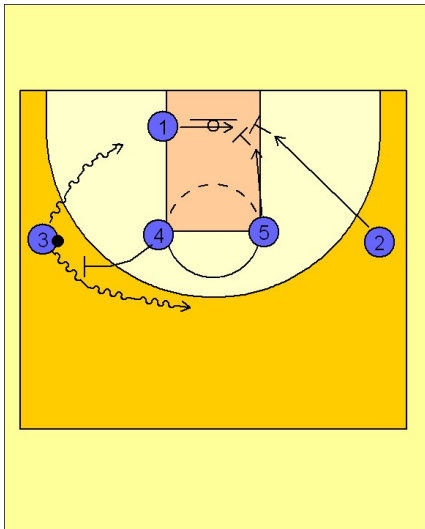
1



Michigan State Set Play

(#1) enters to (#3) and uses the UCLA cut to the basket off of (#4's) screen. You can post up the (#1) man if he has a mismatch or if he is good in the post, but this is certainly not your best option here.

2

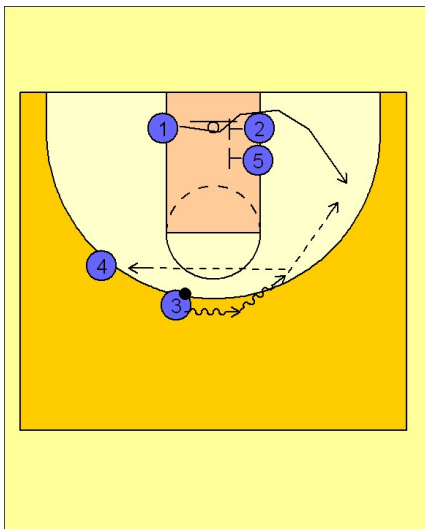


Michigan State Set Play

If (#1) does not receive the ball, he quickly clears out and looks to get a double screen on the back side from the (#5 and #2) men.

While (#1) is clearing out, (#3) has the option to use the ball screen from (#4) or he can fake it and take the ball to the basket just vacated by the (#1) man. This is a great opportunity to get to the basketball for a layup and a possible three point play, as the helpside defense is clearing out with the (#1) man.

3

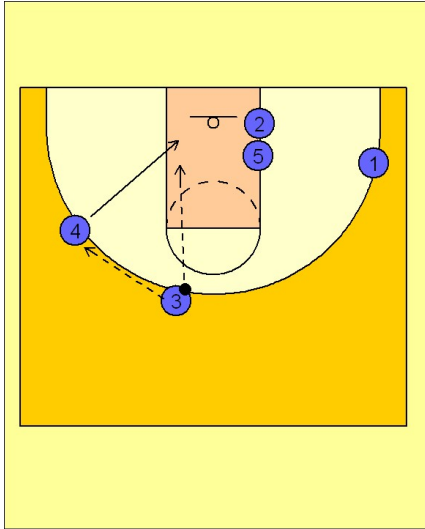


Michigan State Set Play

If he uses the ball screen from (#4), he will take it hard to the top looking for the (#1) man coming off of the double screen.

Michigan state Set play (8)

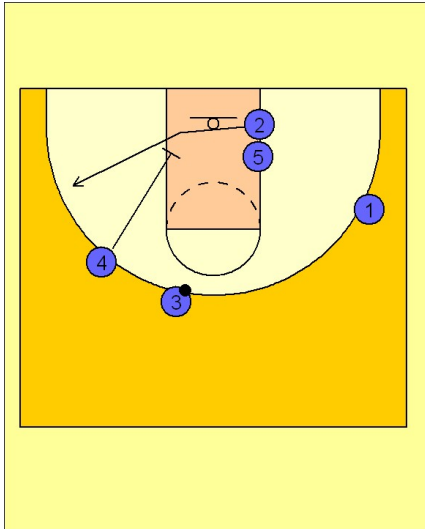
4



Michigan State Set Play

If your (#4) man is a good outside shooter, he can pop out for the three point shot off of the pick and roll. You could also run a nice back door play with the (#4) man as well. Timing is crucial for the effectiveness of this play, especially if you want to add the back door option.

5



Michigan State Set Play

If the (#4) man does not receive the pass he can continue into the lane looking to screen for the (#2) man popping out for a jump shot on the wing.

You are now in your 3 out 2 in alignment and can run your motion offense.