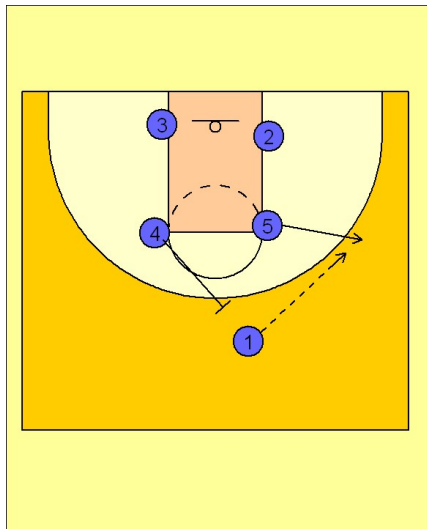


Michigan state Set play (9)

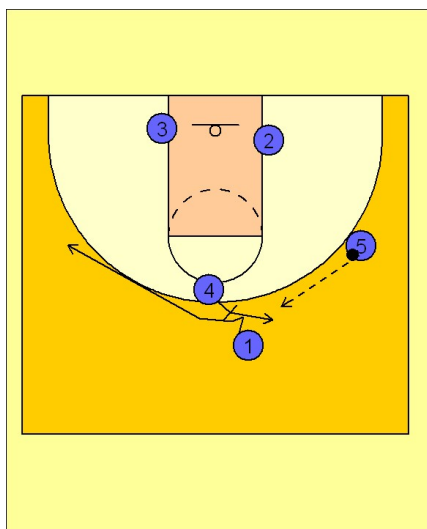
1



Michigan State Set Play

Box set. (#5) pops out to wing. (#1) enters the ball to (#5).

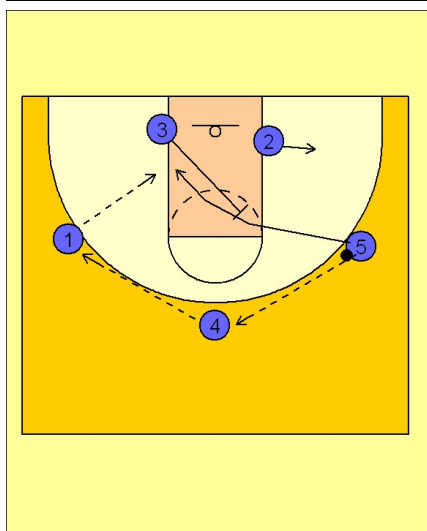
2



Michigan State Set Play

(#1) receives a back screen from (#4) and fades to the opposite wing. After the screen (#4) pops out and receives the pass from (#5).

3



Michigan State Set Play

(#5) reverses the ball to (#4) who reverses the ball to (#1). You could also use a skip pass to (#1) if (#4) was denied.

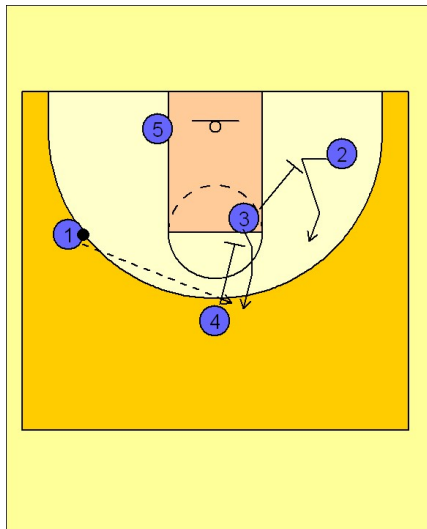
After (#5) reverses the ball, he receives a diagonal back screen from (#3).

Michigan state

Set play (9)

4

Michigan State Set Play



After (#3) sets the diagonal back screen, he has two options here. He can receive a down screen from (#4), or he can go and down screen (#2's) defender, creating a staggered screen situation with (#3 and #4) and a potential jump shot at the top of the key.

(#4) can then slide into the open low block, while (#3) pops out to the wing and your 3 out 2 in alignment is set to begin your motion offense.