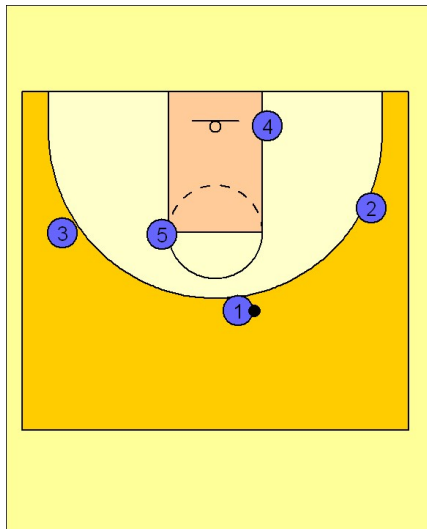


Michigan state

Zone offense (1)

1

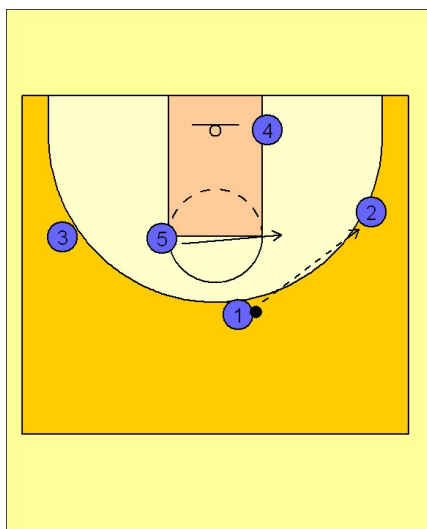


Michigan State Zone Offense

This is MSU's basic zone offense with a 3 out 2 in alignment. The (#4 and #5) men "X" in the post as the ball is being reversed.

One option they will use, especially against a 1 - 2 - 2 zone is to send the post players to the short corner (which you will see diagramed later).

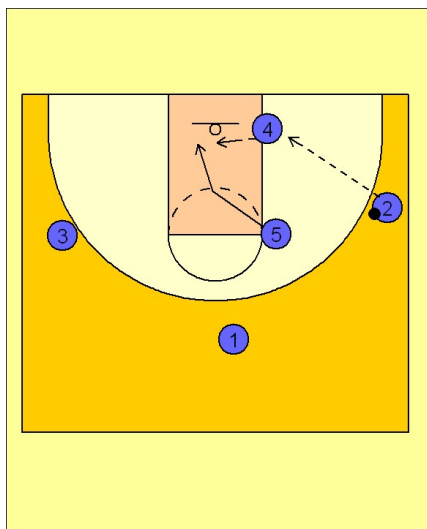
2



Michigan State Zone Offense

The post man (#5) follows the ball to the high post while the other post man (#4) fights for post position underneath.

3



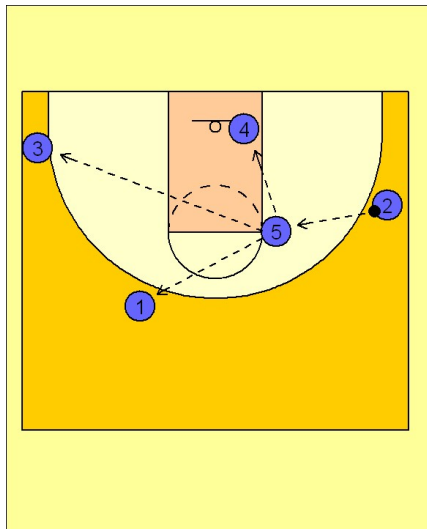
Michigan State Zone Offense

Any time the ball is entered to the low post, the opposite high post man should dive to the basket looking for the return pass from (#4).

Michigan state

Zone offense (1)

4



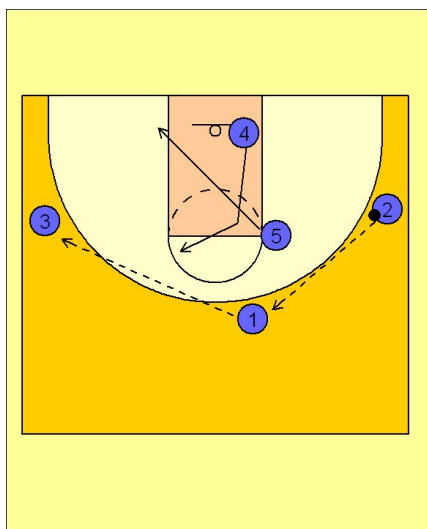
Michigan State Zone Offense

If the pass enters the high post (#5), the opposite low post man (#4) ducks in and looks for a post feed from (#5).

Then (#5) should look to the opposite side of the floor.

His rules in the high post are always to look inside, then opposite.

5

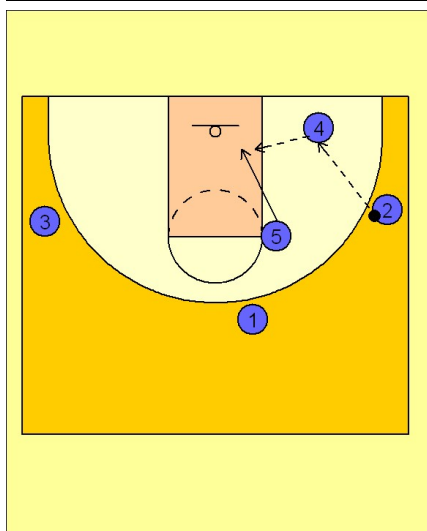


Michigan State Zone Offense

When the ball is reversed, the post men will "X", with the (#5) man breaking to the low post spot and the (#4) man flashing into the high post area.

Both (#4 and #5) will look to come in behind the zone defenders trying to find open gaps in the defense.

6



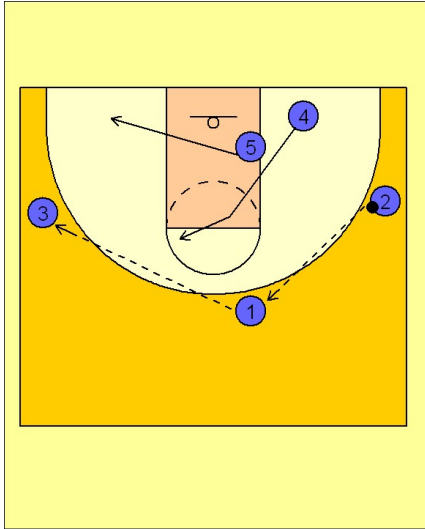
Michigan State Zone Offense

Michigan State, like most good zone offensive teams, likes to attack the "short corner" of the zone defense. Here we see the (#4) man stepping out to the short corner area. This brings a defender away from the basket opening up a lane for the cutting (#5) man to receive a pass or good post position.

Michigan state Zone offense (1)

7

Michigan State Zone Offense



If he does not receive the pass they continue in their "X" motion with the (#5) man stepping out to the short corner on the other side and the (#4) man flashing to the high post.