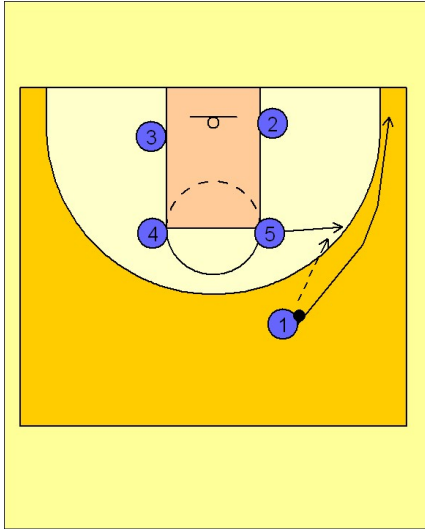


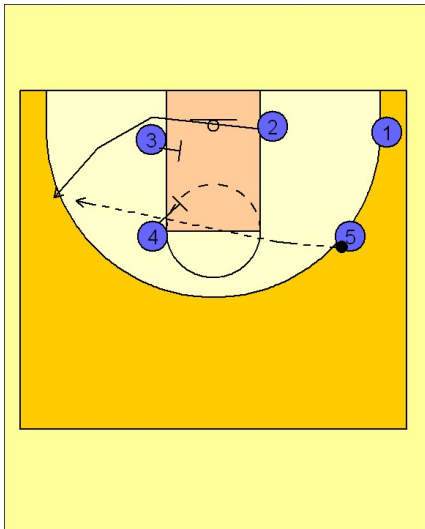
Michigan state Zone offense set play (1)



Michigan State Zone Offense Set Play

Box set to start. (#5) breaks out to the wing.
(#1) enters the ball to (#5) and then follows his pass and clears out to the ball side corner.

1



Michigan State Zone Offense Set Play

(#3 and #4) step in the paint and find the nearest zone defenders and screen the backside of the zone for a skip pass to the cutting (#2) for the three point shot.

2