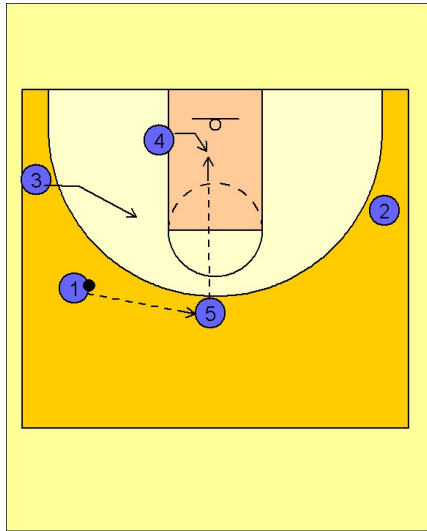


North carolina

Early offense (11)

1



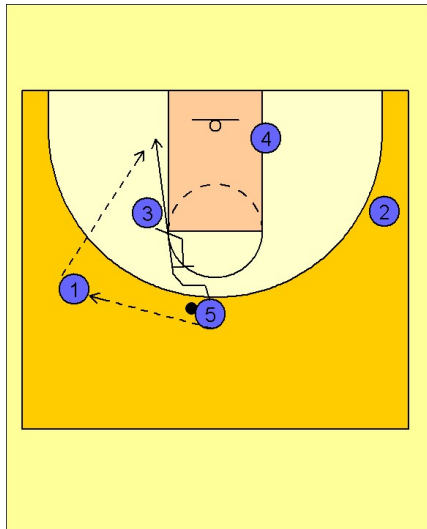
North Carolina Early Offense

Rather than a new early offense from North Carolina, this is rather an option to one of their regular early offense sets.

#1 reverses the ball to #5 on top. #5 looks for the high / low entry pass to #4.

#3 starts to move in to set a backscreen.

2



North Carolina Early Offense

Usually NC will reverse the ball to #2 on the right wing and #3 will backscreen for #5.

Here we see the post player #5 deciding not to swing the ball to #2 on the right wing (perhaps he was denied the pass) and passes the ball back to #1 on the left wing.

If this happens, #5 will use the backscreen again from #3 and will break down to the ball side low block.

#3 will pop out and resume their passing game or motion offense.