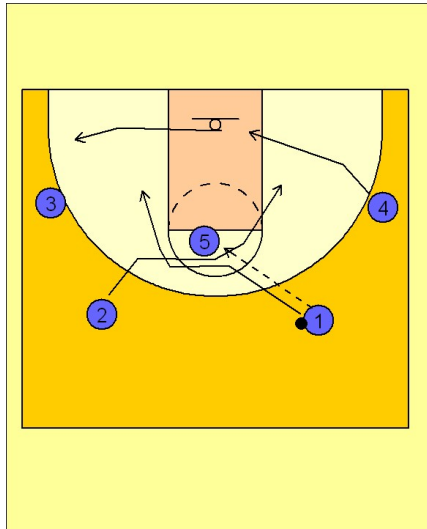


North carolina

Half court offense (1)

1



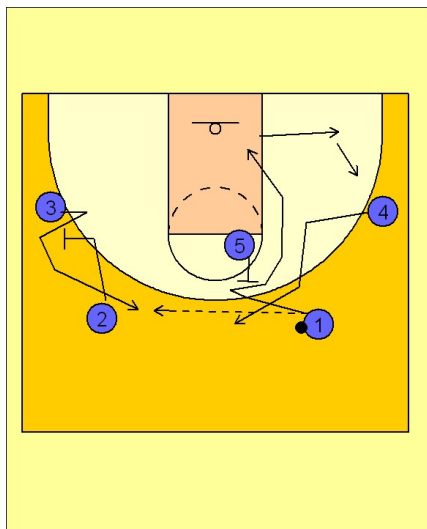
North Carolina Half Court Offense

North Carolina likes to use this alignment against teams that use a lot of pressure. 2-3 high alignment brings the defense away from the basket and creates many driving and cutting opportunities for the offense.

We will look first at the entry pass to the post player (#5). (#1) and (#2) really have a lot of options here. They can "X" cut, as shown here in the diagram, cutting off of each other's backs as they break to the basket.

They may also fake the "X" cut and go straight to the basket off of a screen from the post player (#5), which we will look at later, or they can screen away on the perimeter.

2



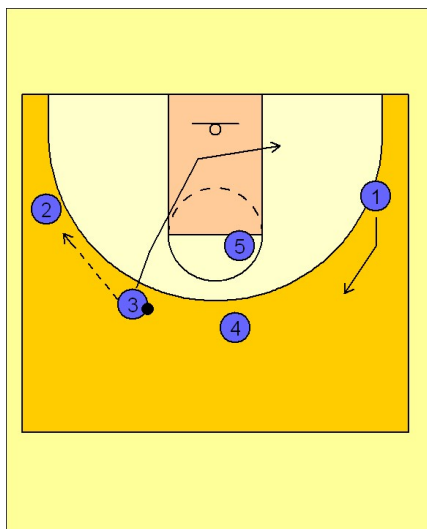
North Carolina Half Court Offense

Here we see an option where the ball is passed from perimeter player (#1) to perimeter player (#3). (#2) has screened away on the perimeter to free (#3) for the entry pass.

(#1) uses the post player (#5) back screen to get open breaking to the basket. He will then clear out to the open wing.

(#4) will replace (#1) on the perimeter.

3



North Carolina Half Court Offense

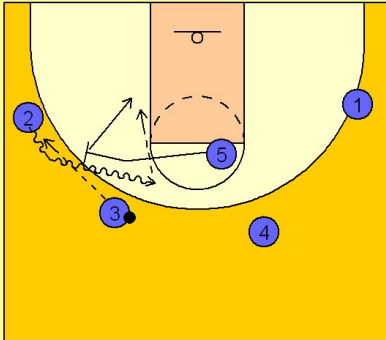
At anytime, the perimeter players may give and go on the perimeter, as shown in this diagram. (#3) passes to the wing player (#2) and then breaks to the basket looking for a return pass. This is simple, yet effective offense with an overplaying defense because of the fact that they defense is brought out away from the basket and vulnerable to basket cuts.

North carolina

Half court offense (1)

4

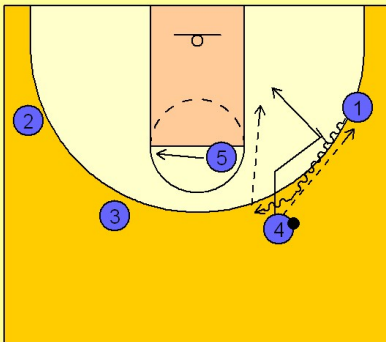
North Carolina Half Court Offense



At anytime, (#5) the post player, may step out and ball screen for the wing players. This is again good action with an overplaying defense and so much room to work with towards the basket. (#2) comes off the screen hard looking for dribble penetration to the basket, (#5) rolling to the basket, or a drive and kick opportunity to one of the wing players.

5

North Carolina Half Court Offense



Perimeter players may also screen on the perimeter when entering the ball to a wing player. Here we see (#4) passing to (#1) on the wing. Normally, (#4) may "X" cut with (#3) or cut to the basket off of (#5's) screen. In this diagram, (#4) may decide to go over and ball screen for (#1).