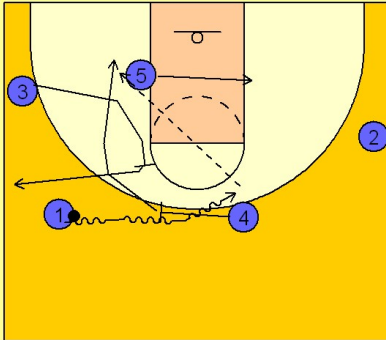


North carolina

Set play (2)

1

North Carolina Set Play vs. Man



(#1) and (#4) execute the pick and roll out front.

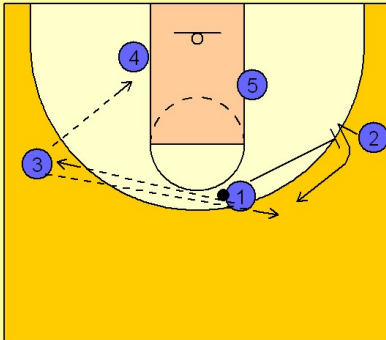
(#5) follows the ball across the lane.

(#3) moves in and sets a back screen for the screener (#4). (#4) rolls to the basket looking for the lob pass from (#1).

(#3) pops out to the wing after screening.

2

North Carolina Set Play vs. Man



(#1) hits (#3) with a pass and immediately looks to post up (#4) who has pinned and sealed for position after attacking the basket for the lob.

(#1) screens away for (#2) after passing. (#3) can look for the jump shot option by passing to (#2) off the screen from (#1).