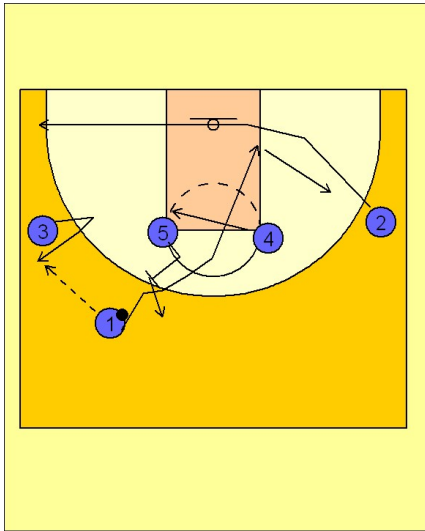


# North carolina

## Set play (3)

1



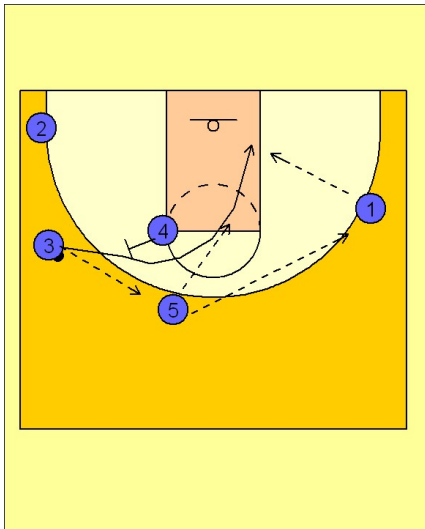
North Carolina Set Play vs. Man

(#1) enters to (#3) on the wing.

(#5) steps out to set a back screen for (#1) who clears to the opposite block and then back out to the opposite wing area. (#5) steps out to the perimeter after the back screen.

(#4) moves over to ball side high post and (#2) clears to ball side corner.

2



North Carolina Set Play vs. Man

(#3) reverses the ball to (#5) who passes to (#1) on the wing.

(#3) cuts to the ball side block off the back screen from (#4). (#3) can receive the pass from (#5) or (#1).