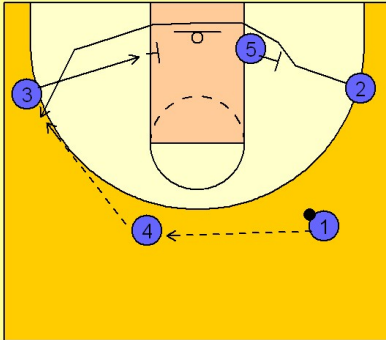


North carolina

Set play (5)

1

North Carolina Set Play vs. Man Defense

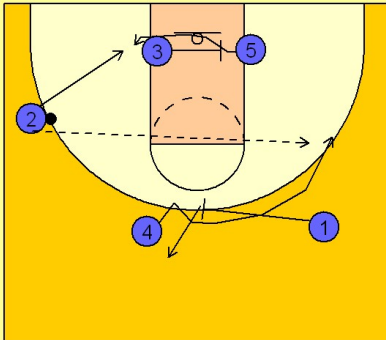


#1 reverses the ball to #4 on top. #3 moves down to set a screen on the block. #2 cuts across the bottom getting screens from #5 and #3 and breaks out to the opposite wing.

#4 hits #2 coming off the screens.

2

North Carolina Set Play vs. Man Defense



Once #2 has the ball, #3 screens across for #5 bringing him to the ball side block and #1 back screens for #4 looking for the fade and skip pass to the back side of the defense.