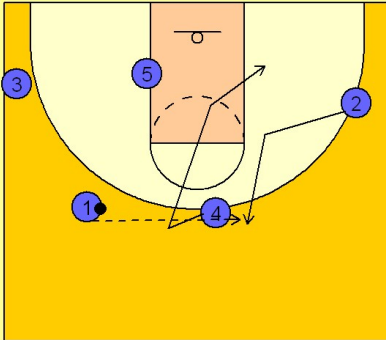


North carolina

Set play (6)

1

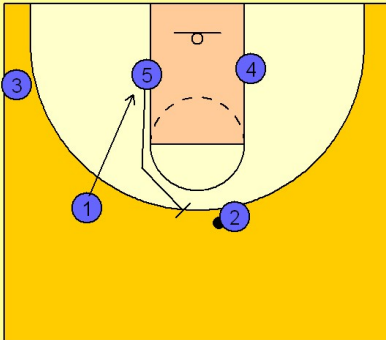
North Carolina Set Play vs. Man Defense



#4 fakes to receive the pass and cuts through the lane to the opposite block area. #2 cuts in and out to receive the entry pass from #1.

2

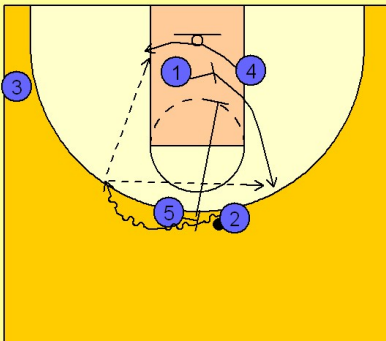
North Carolina Set Play vs. Man Defense



As #2 catches the ball, #5 moves up to set a ball screen for #2, while #1 clears out and down to the low block area opposite #4.

3

North Carolina Set Play vs. Man Defense



#2 and #5 execute the pick and roll while #1 screens across for #4. #2 looks for #4 on the block first. His second look will be for #1 coming off the down screen from #5.