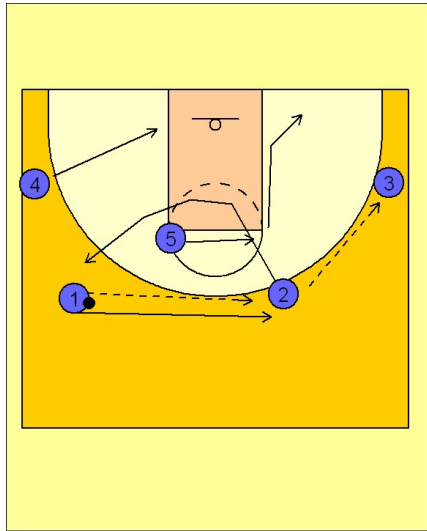


# North carolina

## Set play vs. zone (2)

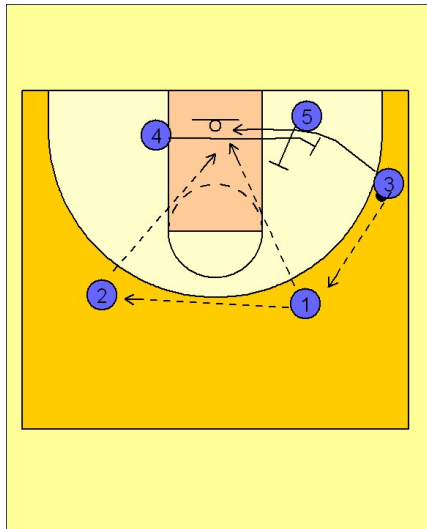
1



North Carolina Set Play vs. Zone

- (#1) passes to (#2) who passes to (#3).
- (#2) cuts through and out to the opposite side perimeter spot.
- (#5) follows the ball to the elbow and then down to the short corner area when (#3) receives the pass.
- (#1) slides over to replace the spot (#2) vacated.
- (#4) moves down to the block opposite the ball.

2



North Carolina Set Play vs. Zone

- (#3) reverses the ball to (#1) who can then pass to (#2).
- (#5) screens the middle of the zone while (#4) comes across and screens the back side defender. (#3) moves along the baseline for the lob pass from either (#1) or (#2).