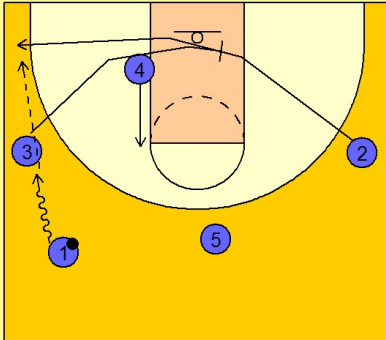


Notre dame

Early offense (2)

1

Notre Dame Early Offense

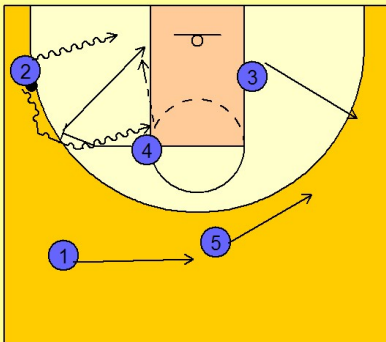


#1 drives the ball at the left wing player #3. #3 clears out into the lane and screens for #2 cutting across to the ball side corner area.

#4 slides up the lane. #1 enters the ball to #2 in the left corner area.

2

Notre Dame Early Offense



#2 can look to penetrate baseline for the score or can use the ball screen set by #4. #4 will roll to the basket after #2 comes over the top of the screen.