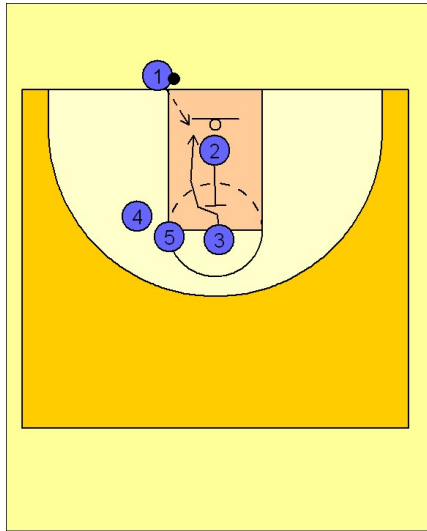


Notre dame

Ob under vs. man (1)

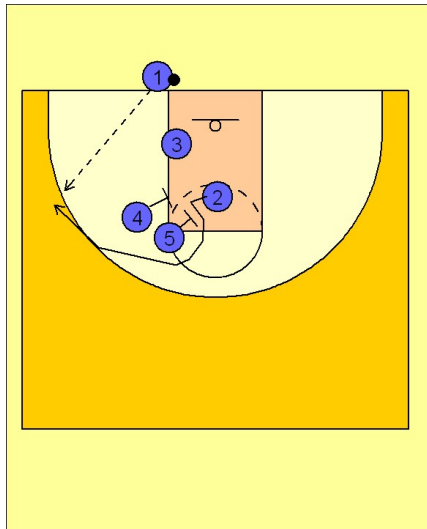
1



Notre Dame OB Under vs. Man Defense

#2 starts the play by back screening for #3 who cuts straight to the basket looking for the quick hitting entry pass for the layup.

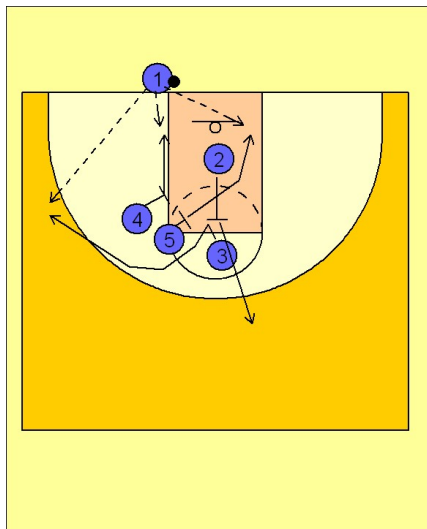
2



Notre Dame OB Under vs. Man Defense

After #2 screens, he gets a double screen from #4 and #5. #2 cuts out to the ball side wing looking for an entry pass from #1.

3



Notre Dame OB Under vs. Man Defense

Another option off of this play is for #3 to fake like he is going to use the back screen from #2 and then comes off the double screen from #4 and #5.

After screening, #4 cuts straight to the ball side block while #5 cuts across the lane to the other block. #2 breaks straight out on top.