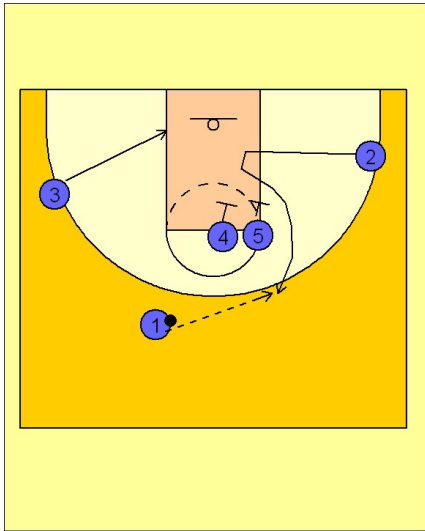


Notre dame

Set play vs. man (1)

1



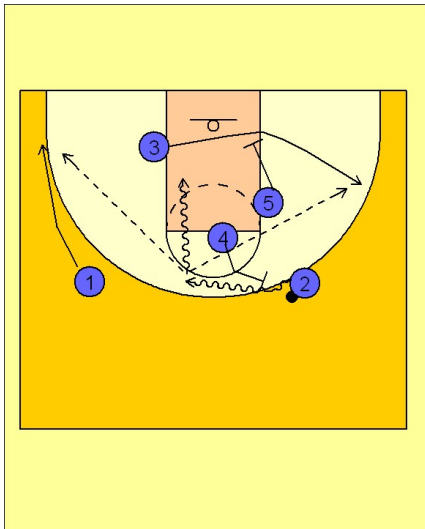
Notre Dame Set Play vs. Man Defense

#4 and #5 set a double screen for #2 on the right FT line elbow.

#3 cuts down to the low block area.

#1 looks to hit #2 coming off of the double screen from #4 and #5.

2



Notre Dame Set Play vs. Man Defense

Once #2 gets the ball, #5 moves down to set a screen for #3, while #4 steps out and sets a ball screen for #2.

#2 can look at #3 coming off the down screen from #5. He can also look to penetrate and score, or he can drive and kick it out to the spotting up #1.