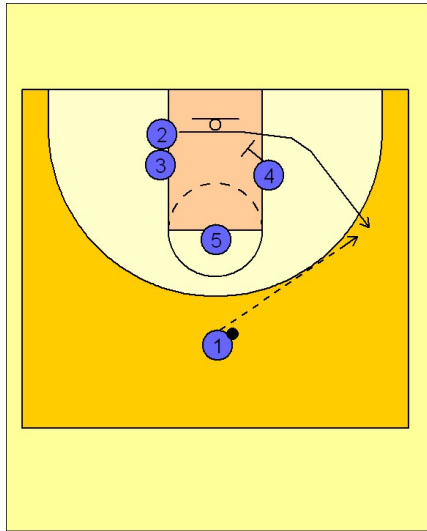


Notre dame

Set play vs. man (2)

1



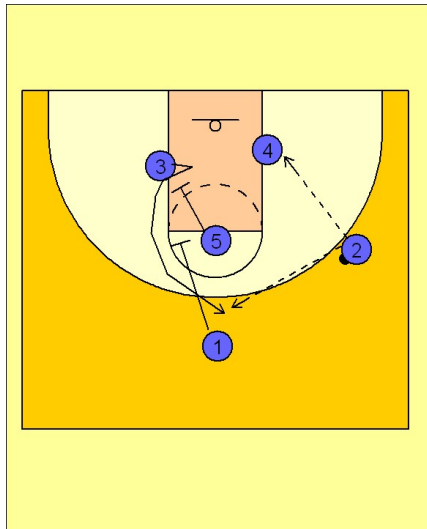
Notre Dame Set Play vs. Man Defense

#2 and #3 stacked up on the left low block.

#2 breaks out to the right corner off a single screen from #4.

#1 hits #2 with a pass on the right wing.

2



Notre Dame Set Play vs. Man Defense

Once #2 has the ball, #4 ducks in and posts up on the right block looking for an entry pass from #2 on the right wing.

#5 and #1 move down and set a staggered double screen for #3 coming to the top of the key area for the jumper.