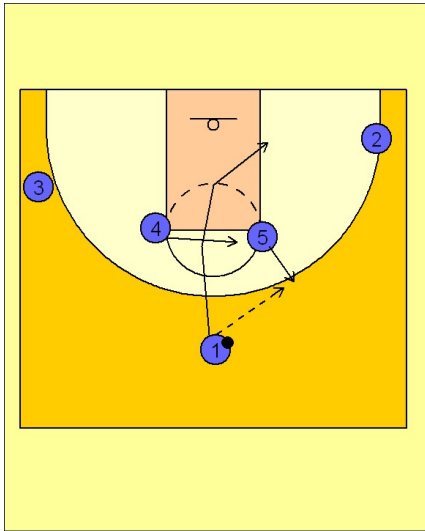


# Notre dame

## Set play vs. man (3)

1

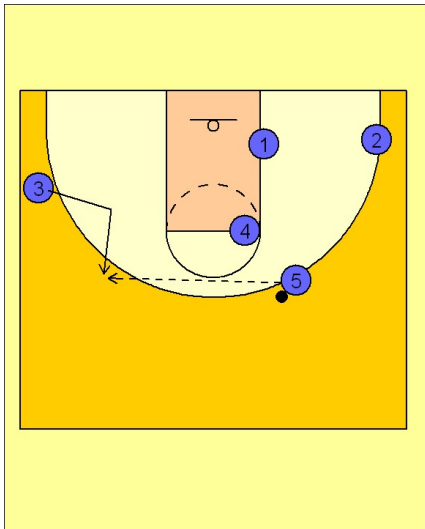


Notre Dame Set Play vs. Man Defense

#5 steps out to receive the entry pass from #1.

After passing, #4 slides over to replace #5 and #1 cuts to the basket low block area on the ball side.

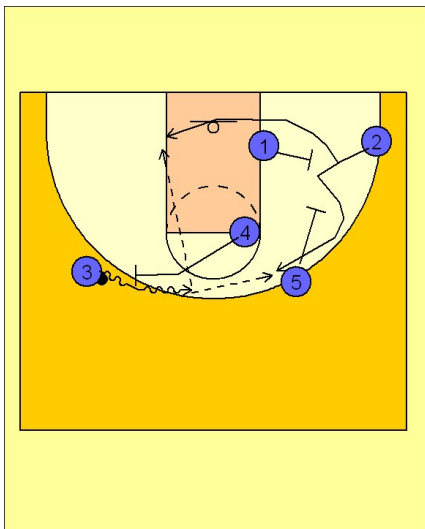
2



Notre Dame Set Play vs. Man Defense

#3 makes a good cut to get open on the back side of the floor. #5 reverses the ball over to #3 on the left wing.

3



Notre Dame Set Play vs. Man Defense

Once #3 receives the ball, #4 steps out and sets a ball screen for #3. #1 steps out and back screens for #2 while #5 moves down to set a down screen.

#2 has the option of using #1's screen and cutting across the basket area or he can fake low and come off the down screen from #5.

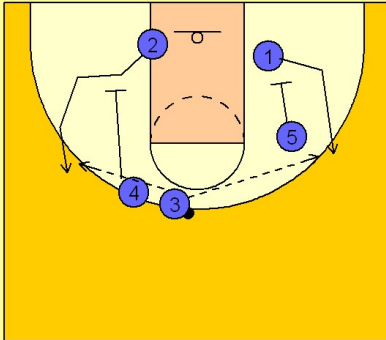
#3 coming off the ball screen from #4 will look to hit #2 cutting high or low.

# Notre dame

## Set play vs. man (3)

4

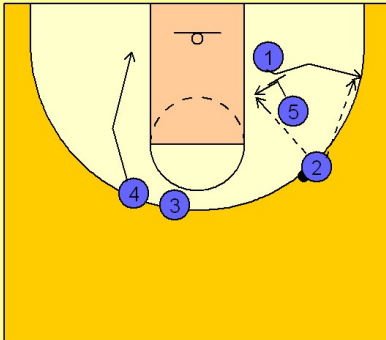
### Notre Dame Set Play vs. Man Defense



If #2 cuts low, #5 will continue down and screen for #1. #4 will move down after ball screening and down screen for #2. #3 will look to hit either #1 or #2 coming off of down screens.

5

### Notre Dame Set Play vs. Man Defense



If #2 comes high off the screen from #5, #5 can continue down and screen for #1. #2 will look to score himself or he can look for #1 coming off the down screen from #1. #5 will also look to post after the screening action.