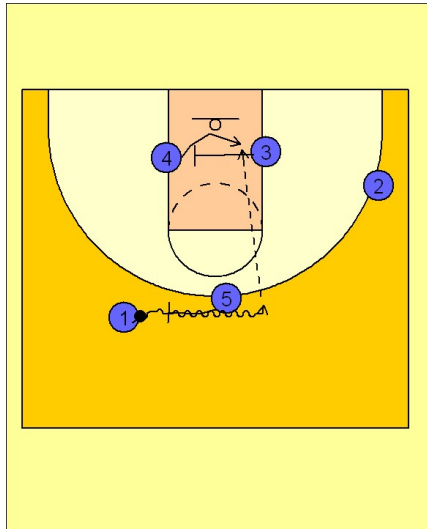


Notre dame

Set play vs. man (4)

1

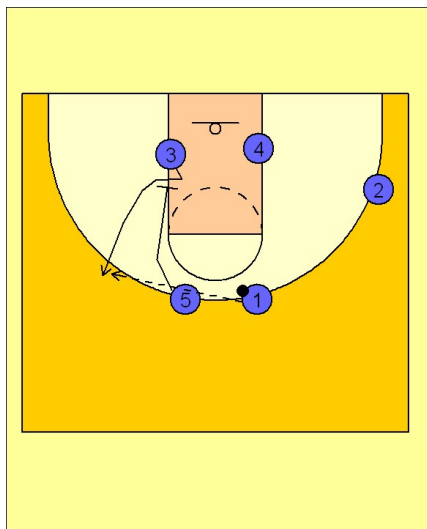


Notre Dame Set Play vs. Man Defense

#5 ball screens on top for #1. As this is happening, #3 moves across and screens for #4.

#1 comes off the ball screen looking to enter the ball inside to #4.

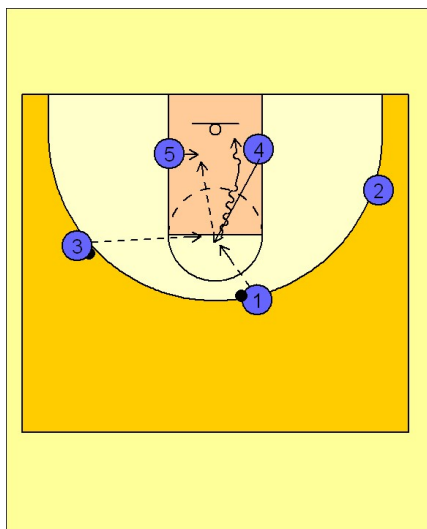
2



Notre Dame Set Play vs. Man Defense

After ball screening, #5 moves down and screens for #3, who breaks out to the left wing looking for the pass from #1 and the open jump shot.

3



Notre Dame Set Play vs. Man Defense

Whether or not #3 gets the ball, #4 will flash to the high post looking for the ball from either #1 or #3. If he receives it, #5 will duck in looking for the post entry pass from #4. #4 may also look to turn and penetrate to the basket.