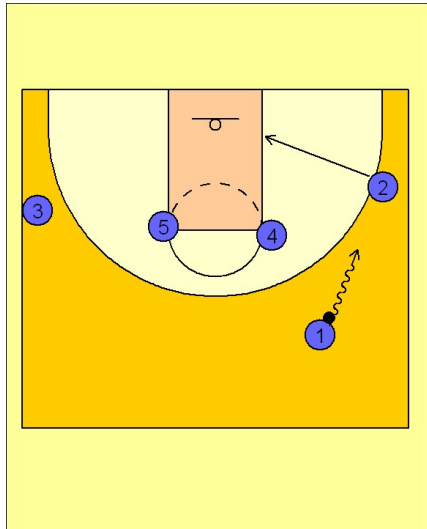


Notre dame

Set play vs. man (5)

1

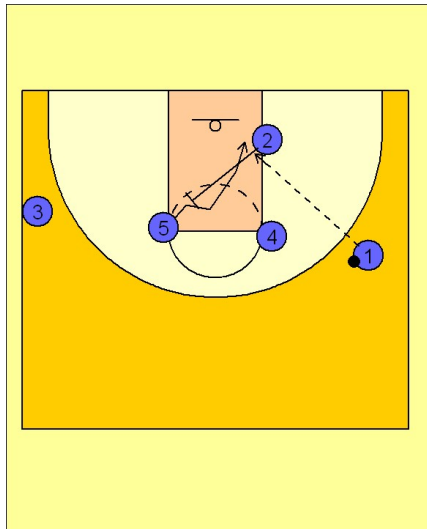


Notre Dame Set Play vs. Man Defense

1 - 4 high across to begin.

#1 dribbles the ball at either wing. In this diagram he dribbles at #2 on the right wing. #2 moves down to the ball side block.

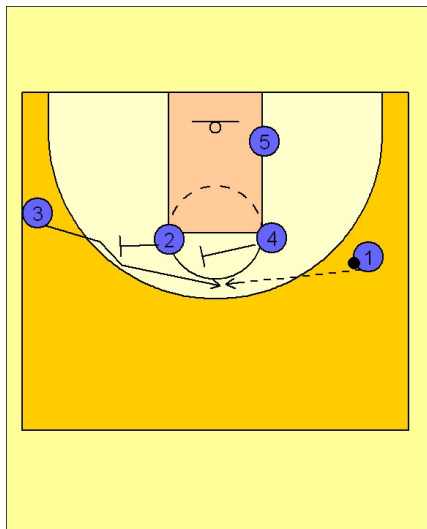
2



Notre Dame Set Play vs. Man Defense

Once #2 gets to the low block he moves up and sets a diagonal back screen on #5 bringing him to the low block for the post entry pass from #1.

3



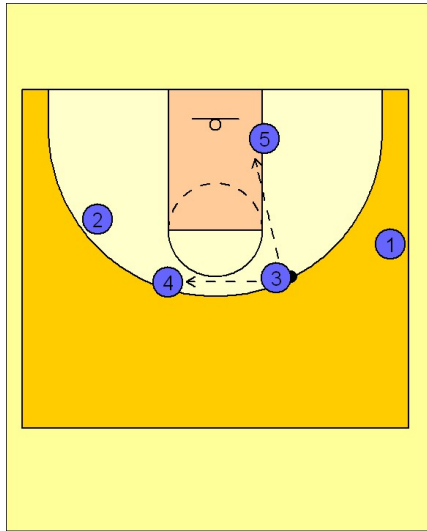
Notre Dame Set Play vs. Man Defense

If #5 does not get the ball, #4 and #2 set a double staggered cross screen for #3 on the left wing. #1 will look to hit #3 on top for the open jumper.

Notre dame

Set play vs. man (5)

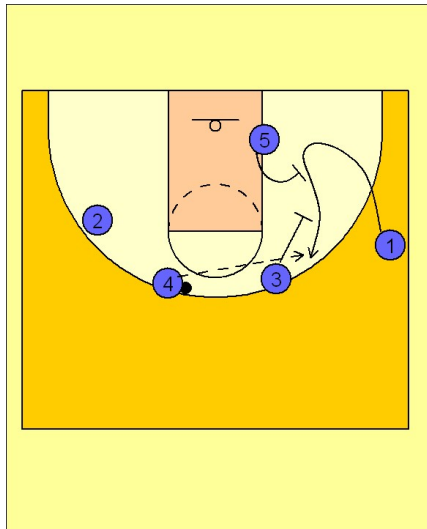
4



Notre Dame Set Play vs. Man Defense

Once #3 has the ball he can first look to shoot if he is open. If he does not have a shot, he will look inside to #5 isolated in the post or he will reverse the ball to #4.

5



Notre Dame Set Play vs. Man Defense

Once #4 has the ball, #3 and #5 will set up on the right wing area to screen for #1, who has cut down and up off the picks by #5 and #3.