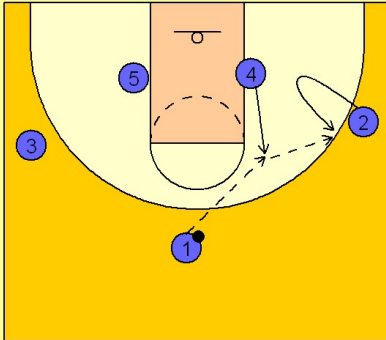


Notre dame

Set play vs. man (8)

1

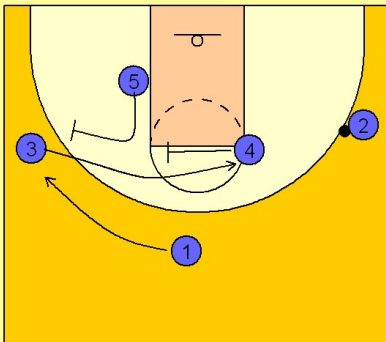
Notre Dame Set Play vs. Man Defense



#4 flashes to the high post and catches the entry pass from #1. #2 fakes away and out to the right wing area to catch the next pass from #4.

2

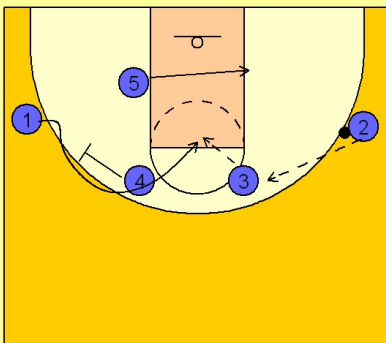
Notre Dame Set Play vs. Man Defense



Once #1 passes the ball to #4 he cuts away to the back side wing area. #4 and #5 set double staggered screens for #3 who cuts over the top.

3

Notre Dame Set Play vs. Man Defense



If #3 is open, #2 passes him the ball. #3 will then look for #1 curling over the top of #4's screen. If #3 didn't get the ball on the first double staggered screen, he would just cut through the lane and the action would still continue with #4 screening for #1.