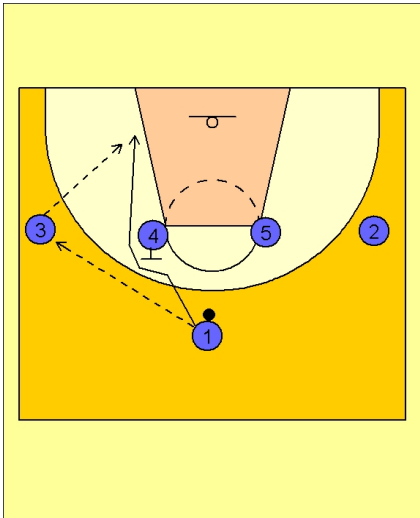




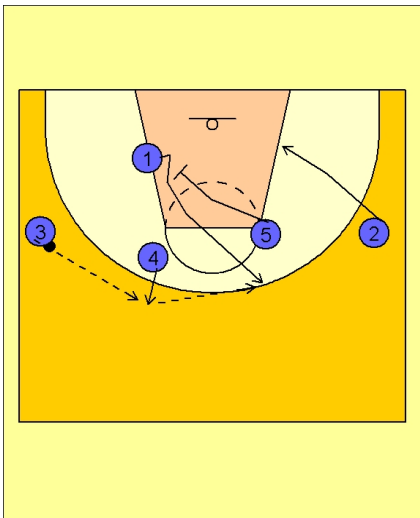
1-4 set play



New Zealand 1 - 4 Set Play

#1 enters to either wing (#3 in this diagram on the left wing) and then uses the UCLA cut off the back screen from #4 to the ballside low block.

#3 may look to hit #1 with a pass on the block if he is open.



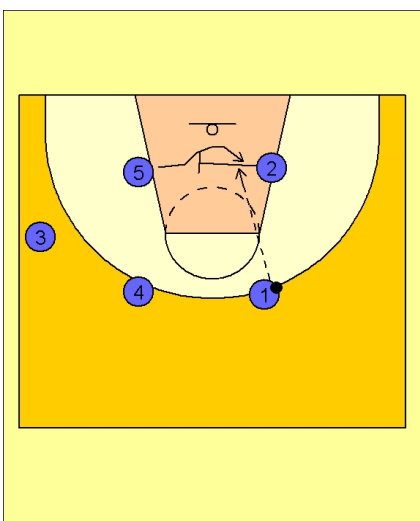
New Zealand 1 - 4 Set Play

If #1 does not receive the ball, #4 steps out after back screening for #1, and receives the pass from #3.

As the ball is in flight to #4, #5 is cutting in the lane to set a screen for #1.

#1 breaks up to the top of the floor and receives the next reverse pass from #4.

#2 also begins his movement down to the lane line as the ball is being reversed from #4 to #1.



New Zealand 1 - 4 Set Play

As #1 catches the ball, #2 is screening across for #5. #1 looks to feed #5 inside if he is open.

Timing is crucial on this play so that the ball is not "waiting" in one spot too long for the screening action to occur.



New Zealand 1 - 4 Set Play

If #5 does not get the ball, #4 is down screening for #2 who looks to get open for the jumper on top.

If you wanted, you could add #3 in the screening action with #4, making it a double screen for #2.

