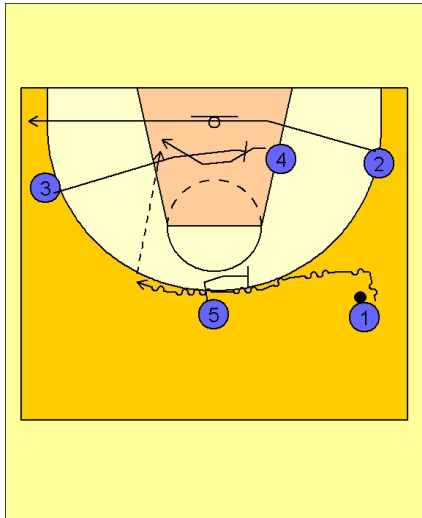




Transition pick and roll



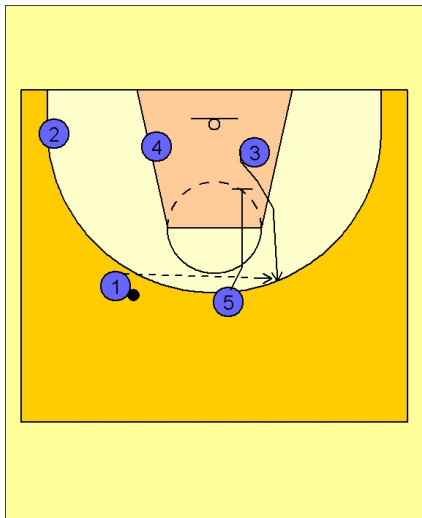
New Zealand Transition Pick and Roll Entry

#1 brings the ball up the court and turns his direction towards the middle of the floor, using the ball screen on top from #5.

As this is happening, #2 clears across the lane out to the opposite corner area.

#3 is moving in the lane looking to set a screen for #4 inside.

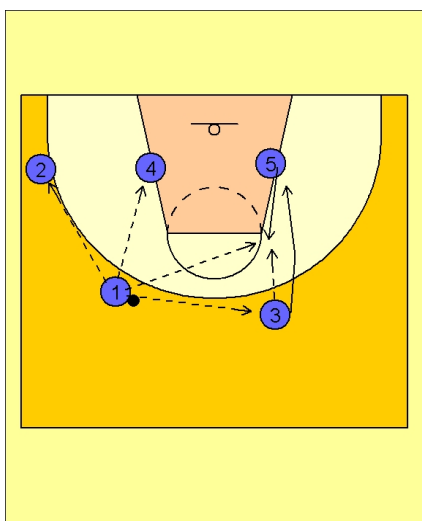
#1 looks to feed #4 inside if he is open.



New Zealand Transition Pick and Roll Entry

If #4 is not open, #5 continues his movement after ball screening for #1 and sets a down screen for #3 in the lane.

#1 looks to hit #3 for the open jumper on top.



New Zealand Transition Pick and Roll Entry

As you can now see, we are in the same alignment previously diagrammed in the Trailer Entry series.

From here New Zealand will run the same Triangle Options to the post and to the top of the key or "pinch post" area as outlined at the end of the "trailer entry" options.