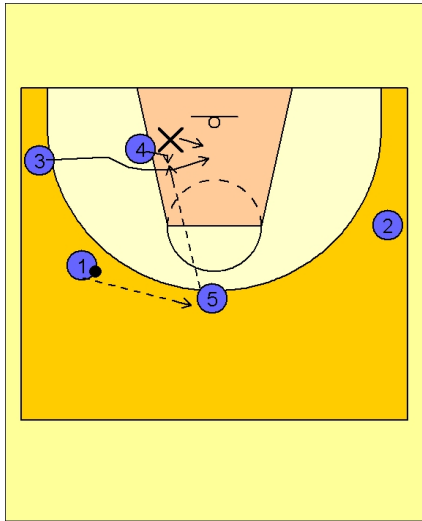




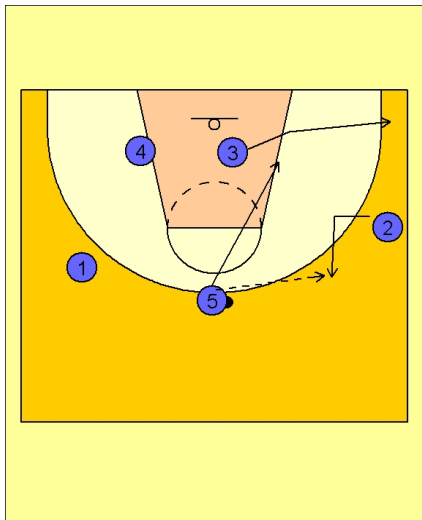
### Transition trailer entry



#### New Zealand Transition Trailer Entry

As #1 brings the ball up the sideline, he reverses the ball to the trailer #5. As the pass is in flight to #5, #3 is cutting over the top of #4 on the blocks.

This cutting action forces #4's defender to "help" momentarily on the cut by #3. This momentary help action from #4's defender will give #4 an opportunity to get good inside post position and a potential post entry pass on top from #5.

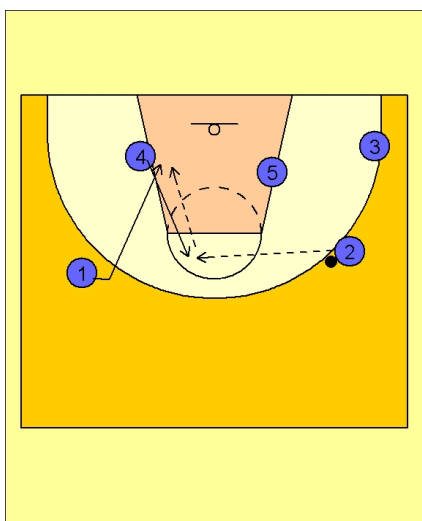


#### New Zealand Transition Trailer Entry

If #4 did not get the ball on the high / low entry pass, #3 continues his cut out to the opposite corner area.

#5 reverses the ball to #2 who has walked his man in and timed his break out cut to receive the ball.

#5 makes the pass to #2 and then cuts down to the ball side low block area.



#### New Zealand Transition Trailer Entry

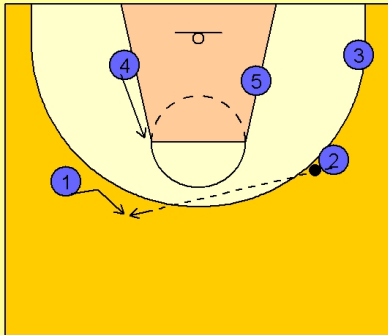
Once #2 has the ball, #4 flashes to the back side elbow area, also known as the "pinch post" area for you "Triangle Offense" fans.

If #1 is overplayed defensively, he will cut back door and look for the pass from #4.



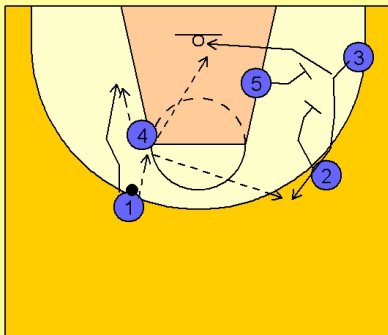
### New Zealand Transition Trailer Entry

#2 will also look to pass the ball to #1 on top while #4 flashes to the "pinch post" area.



### New Zealand Transition Trailer Entry

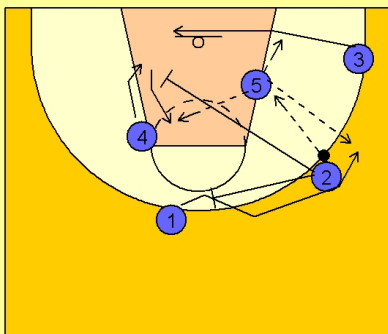
If #1 receives the ball he can quickly execute a "pick and roll" with #4 OR he can enter the ball to #4 and cut to the basket while #5 and #2 set a double screen for #3 in the corner.



### New Zealand Transition Trailer Entry

If #2 decides to keep the ball on his side of the floor and enter the ball to the low post player #5, lots of action takes place.

As #2 passes to #5, #3 cuts back door along the baseline while #2 either cuts into the lane and sets a screen for #4 for the midlane jumper or #2 can also screen away on top, bringing #1 over for the kickout jumper from #5.

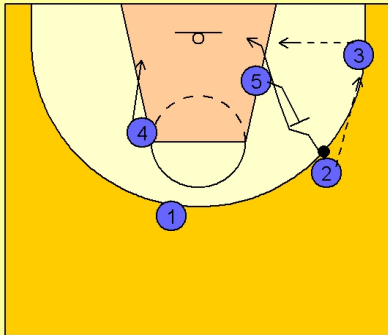




### New Zealand Transition Trailer Entry

If #2 elects to pass the ball to #3 in the corner, #5 will step out and back screen for #2 cutting to the basket. #3 delivers the pass if #2 is open.

#4 begins to slide down the lane.



### New Zealand Transition Trailer Entry

If #2 is not open, #5 continues his movement towards #3 in the corner and executes a screen and roll.

As #3 comes off the ball screen, #2 is breaking up to the top off the double staggered screen from #4 and #1.

#3 can look to score himself, pass to #5 rolling to the basket, or hit #2 breaking up on top.

