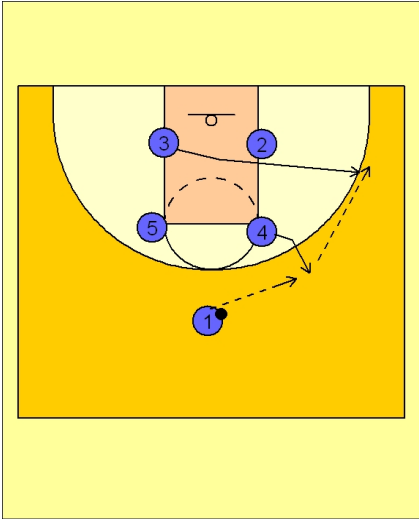




Set play vs. man (1)

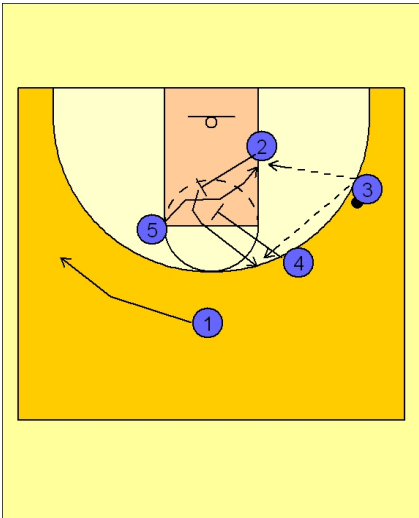


Ohio State Set Play vs. Man Defense

Box set to begin.

#4 steps out a bit to receive the entry pass from #1. #3 steps breaks across and out to the ball side wing area.

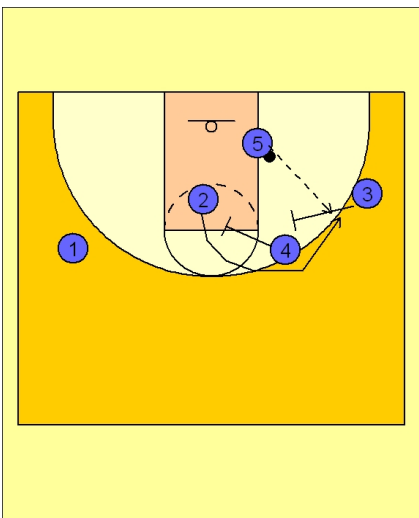
Once #4 receives the ball he turns and throws it to #3 on the wing.



Ohio State Set Play vs. Man Defense

After #4 gives it up to #3, #2 steps up and sets a diagonal back screen for #5 bringing him to the ball side block. After screening, #2 comes off the screen from #4, creating good "pick the picker" action.

#3 can look to dump it into the post or hit #2 for the jumper on top off of #4's screen.



Ohio State Set Play vs. Man Defense

If #3 should get the ball inside to #5, here is where Ohio State uses something I really like. So many teams don't execute enough good basketball after the ball goes inside, as if it won't come out and the player will shoot.

Here Ohio State loads up the post man #5. #4 is already screening for #2 near the FT line area. After passing inside #3 goes and screens #2's man also, giving #2 a double staggered screen to come off of if #5 doesn't get a shot inside.



Ohio State Set Play vs. Man Defense

If #3 does not get the ball inside to #5, #5 will step out and ball screen for #3 on the right wing. #5 will roll to the basket looking for the pass from #3.

