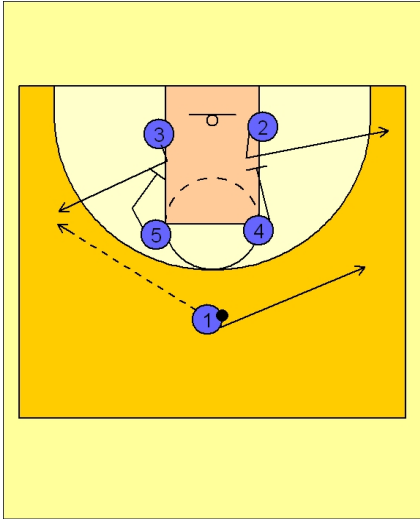




Set play vs. man (11)

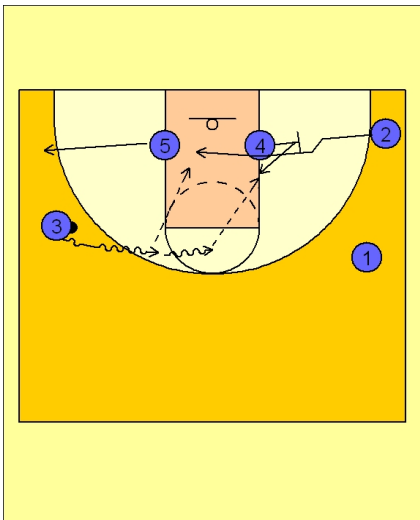


Ohio State Set Play vs. Man Defense

Box set to begin.

#4 and #5 start their down screen action. #2 this time breaks out to the right corner area.

#3 uses the screen to get open on the left wing to receive the entry pass from #1. #1 passes the ball to #3 and cuts away to the opposite side of the floor.



Ohio State Set Play vs. Man Defense

Once #3 has the ball, #5 steps out to the ball side corner area. #3 then takes the ball on the dribble towards the middle of the floor. #2 cuts hard over the screen from #4 looking for the pass from #3. #4 after screening, steps in and posts looking for the pass from #3. This action is effective as #4's man usually opens up and helps on the cut by #2, giving #4 the ability to get good post position inside.