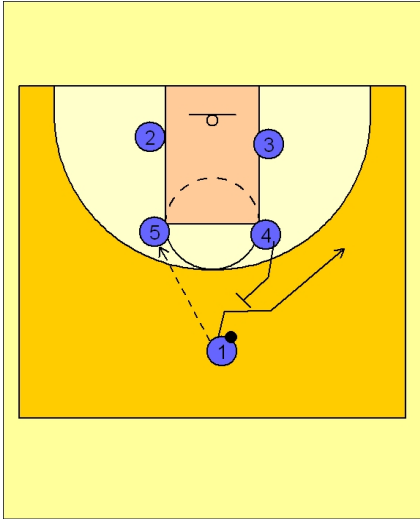




## Set play vs. man (12)

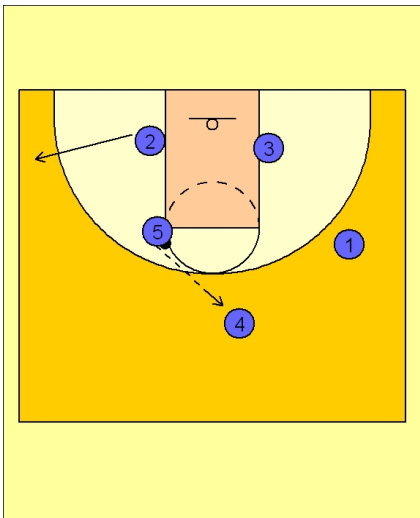


### Ohio State Set Play vs. Man Defense

Box set to begin.

#1 enters the ball to either post. Here we see #1 entering the ball to #5 at the FT line elbow.

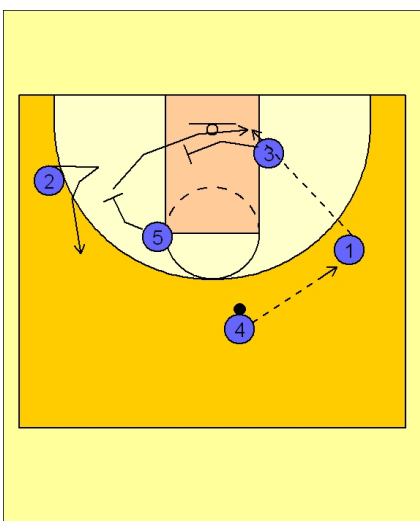
As soon as #1 enters the ball, #4 steps up and sets a back screen for #1. #1 cuts to the right wing area.



### Ohio State Set Play vs. Man Defense

After screening, #4 steps out and receives the pass from #5.

At the same time, #2 is stepping out to the left wing / corner area.



### Ohio State Set Play vs. Man Defense

On the catch, #4 passes to #1 on the right wing.

As this is happening, #5 screens away for #2, and then cuts under the basket off of a backscreen from #3.

#1 looks to feed the post player #5 if he is open.



### **Ohio State Set Play vs. Man Defense**

If #5 does not receive the ball, #4, after passing to #1 on the right wing, will set a down screen in the lane for #3.

#1 will look to hit #3 on top for the jump shot if he is open.

