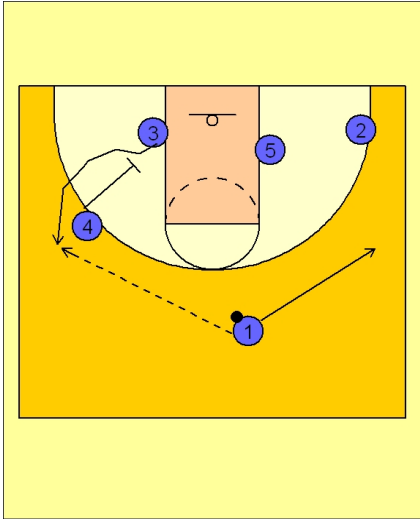




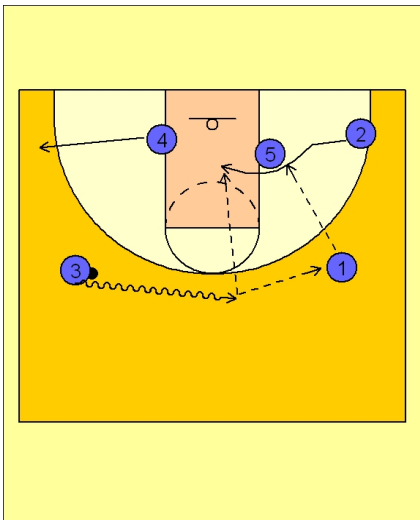
Set play vs. man (13)



Ohio State Set Play vs. Man Defense

The play begins with #4 setting a downscreen for #3 on the left low block.

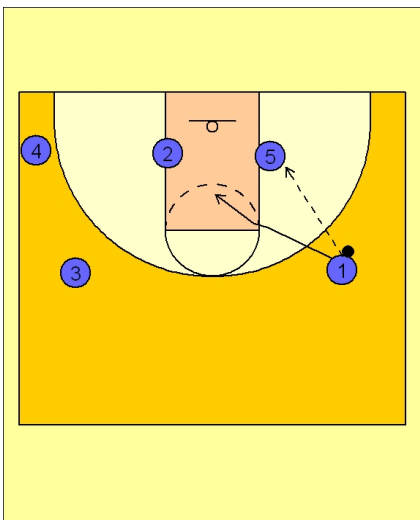
#1 enters to #3 on the left wing and then cuts to the right wing.



Ohio State Set Play vs. Man Defense

On the catch, #3 will penetrate to the top. As #3 is driving to the top, #2 will cut over the top of #5 and in the lane. #3 may look to hit #2 or pass to #1 on the right wing.

When #1 receives the ball he will look to feed the post player #5.



Ohio State Set Play vs. Man Defense

On the post entry pass, #1 will cut down and through the lane, preventing the double team from the defender on the passer.