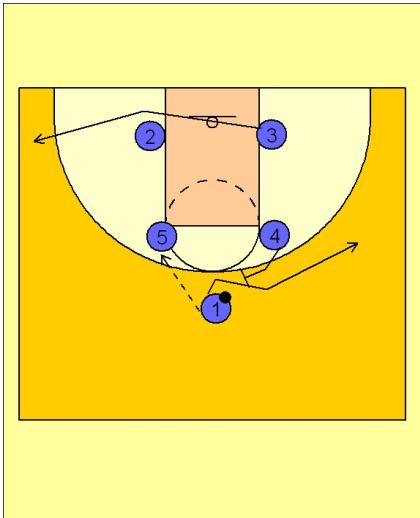




Set play vs. man (14)



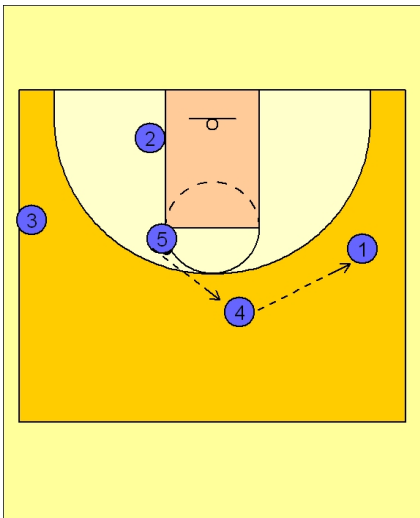
Ohio State Set Play vs. Man Defense

Box set to begin.

#1 enters to either post. Here we see #1 entering the ball to #5 on the FT line elbow area.

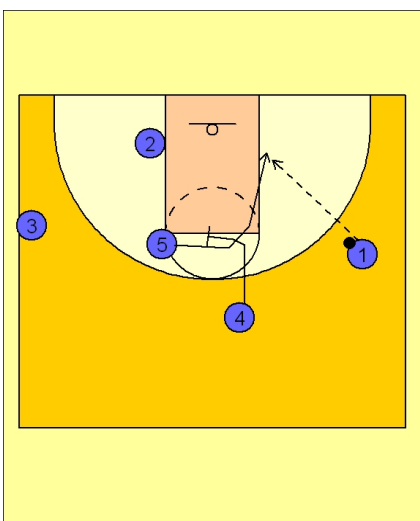
After passing, #4 steps out and sets a back screen for #1. #1 cuts to the right wing.

As this action is taking place, #3 on the right block is clearing out to the left wing area.



Ohio State Set Play vs. Man Defense

#5 then passes to #4 who passes to #1 on the right wing.



Ohio State Set Play vs. Man Defense

After passing, #4 cuts down to the FT line area and then across the FT line to set a screen for #5.

#5 curls over the screen from #4 and slides down the lane to the right low block.

#1 will enter the ball to #5 if he is open.