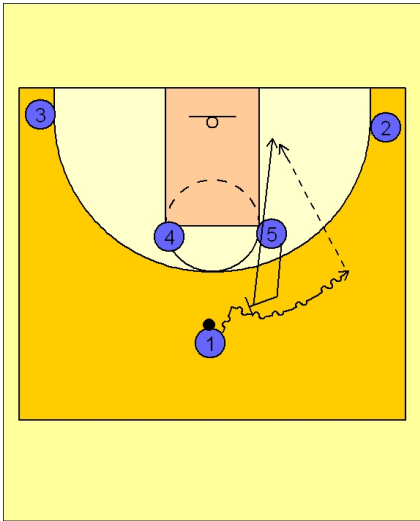




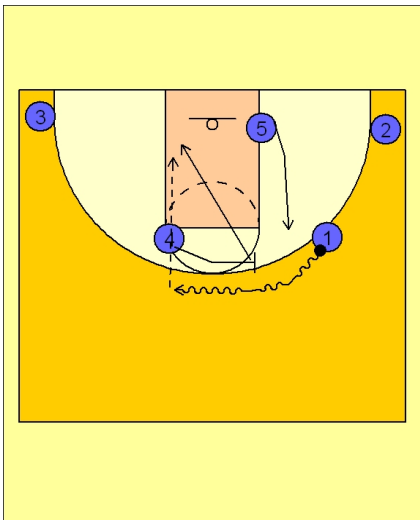
Set play vs. man (15)



Ohio State Set Play vs. Man Defense

#5 or #4 will step out and set a ball screen for #1.

In this diagram we see #1 driving off the ball screen from #5. #5 rolls to the basket looking for the pass from #1.



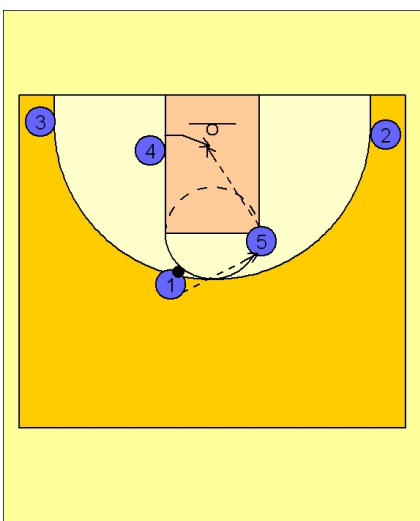
Ohio State Set Play vs. Man Defense

If #5 does not receive the ball, #1 will keep his dribble alive and drive it back towards the top of the key.

#4 steps toward him and sets a ball screen for #1.

As soon as #1 drives off the screen, #4 rolls to the basket looking for the pass from #1.

As #4 is rolling to the basket, #5 is stepping up the lane taking his weakside defense away from the post area.



Ohio State Set Play vs. Man Defense

If #4 is being fronted and #1 cannot enter the ball, #1 will look to pass the ball back to #5 near the FT line right elbow.

As #5 catches the ball, #4 spins and seals in the lane looking for the post entry pass from #5.