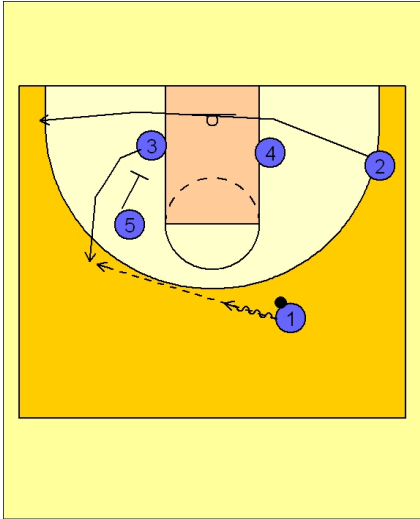




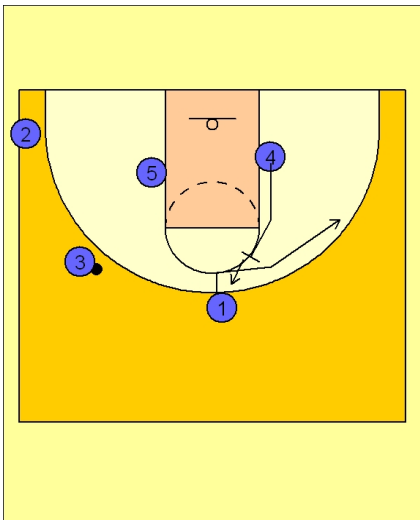
Set play vs. man (16)



Ohio State Set Play vs. Man Defense

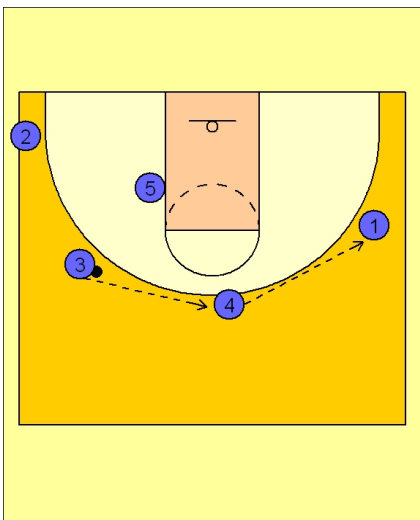
#5 sets a down screen on the left side of the floor to begin the play. As #3 is popping out, #2 on the right side is clearing out to the left corner area.

#1 passes to #3 coming off the down screen.



Ohio State Set Play vs. Man Defense

As soon as #1 passes, he receives a back screen from #4 and cuts to the right wing area.



Ohio State Set Play vs. Man Defense

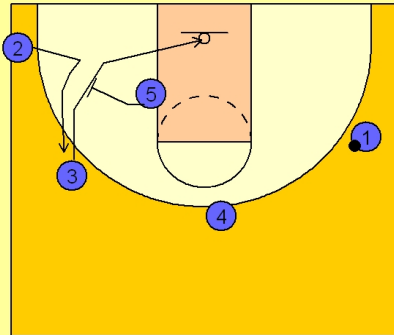
#3 reverses the ball to #4 on top who then passes to #1 on the right wing.



Ohio State Set Play vs. Man Defense

As soon as #3 reverses the ball, he cuts through the lane while #5 is setting a screen for #2 on the left wing area.

#3 cuts hard to underneath the basket.



Ohio State Set Play vs. Man Defense

#3 stops, turns and round and sets a screen for #5. #5 cuts across the lane and looks for the entry pass from #1.

If #5 is not open, #4 sets a down screen for the screener, #3. #1 looks to hit #3 popping up to the top for the open jump shot.

