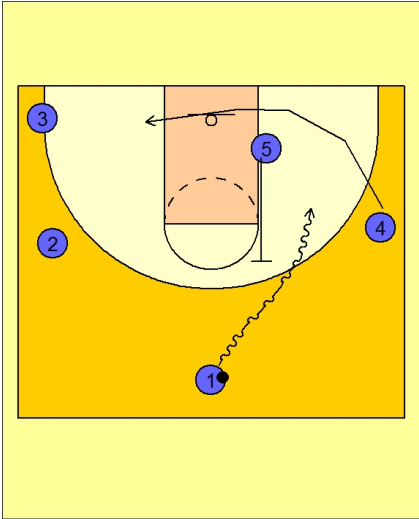




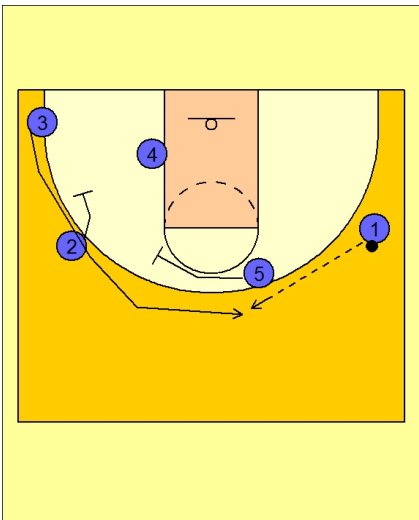
Set play vs. man (20)



Ohio State Set Play vs. Man Defense

#4 clears out the right side while #5 slides up to set a flat back screen for #1.

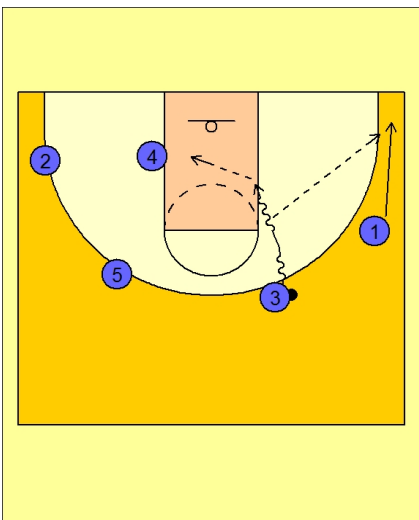
#1 looks to create and score as the first option.



Ohio State Set Play vs. Man Defense

If #1 does not get a shot, #2 and #5 are screening away for #3 on the left side of the floor.

#1 looks to make the pass to #3 on top for the shot.



Ohio State Set Play vs. Man Defense

If #3 does not get the open jumper, #3 will look to penetrate the open block area while #1 spots up on the right corner area looking for the kick out if his defender helps on penetration.

#4 is also looking for the dump off pass if his defender helps on the drive.