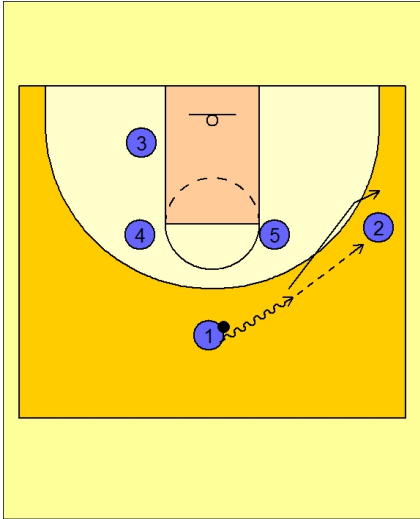




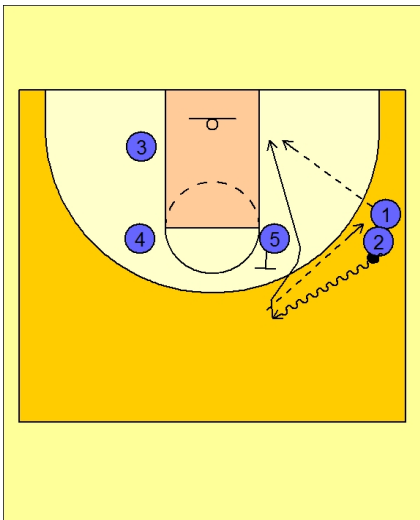
Set play vs. man (22)



Ohio State Set Play vs. Man Defense

#1 drives the ball at #2 on the right wing.

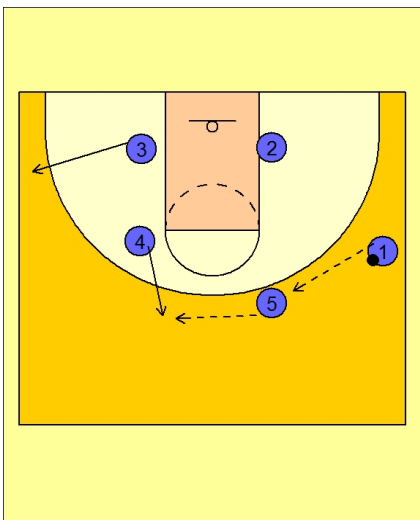
#1 passes to #2 and then cuts to the ball side wing area.



Ohio State Set Play vs. Man Defense

On the catch, #2 drives the ball up on top. As soon as he gets in line with #5, he will pass the ball back to #1 on the right wing.

#5 will now back screen for #2. The first option in this play is for #1 to look for #2 cutting to the basket off the back screen from #5.



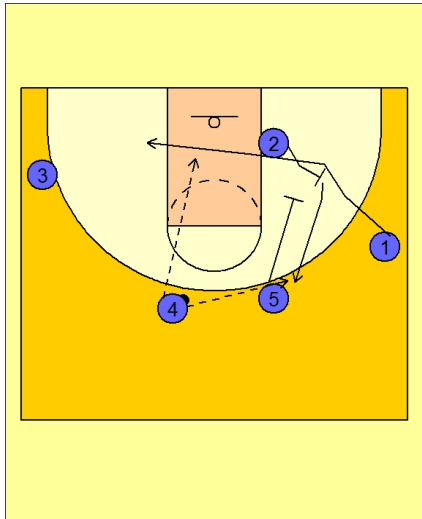
Ohio State Set Play vs. Man Defense

If #2 is not open, #1 reverses the ball to #5 on top who then passes to #4 stepping out on top on the left side of the floor.

#3 breaks out to the left corner area.



Ohio State Set Play vs. Man Defense



#1 now cuts off the back screen from #2. #1 cuts across the lane looking for the pass from #4.

#5 now "screens the screener" and down screens for #2.

#4 now looks to get the ball to #2 on top for the open jump shot.