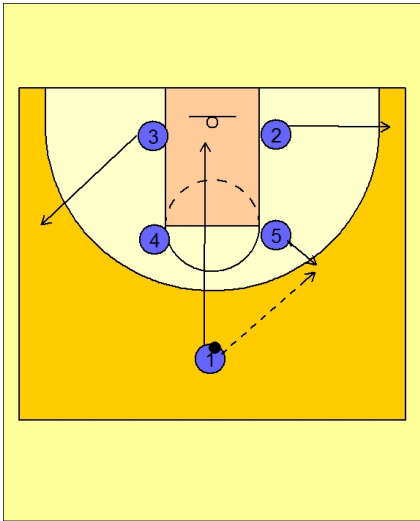




Set play vs. man (23)



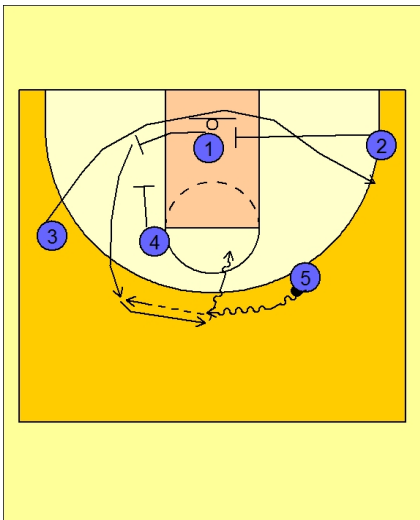
Ohio State Set Play vs. Man Defense

Box set to begin.

#5 steps out to receive the pass from #1.

#1 cuts down the center of the lane.

#2 breaks out to the ball side corner. #3 breaks out to the opposite wing area.



Ohio State Set Play vs. Man Defense

#5 drives the ball on top.

#1 sets a back screen for #3 who uses the back screen from #1 AND another screen in the lane from #2.

After screening, #1 uses a down screen from #4.

#5 can either pass the ball to #3 cutting out to the right wing / corner area or pass the ball to #1 cutting up from the down screen by #4.

#5 may also continue his dribble and execute a dribble hand-off with #1 as he comes off the down screen from #4.