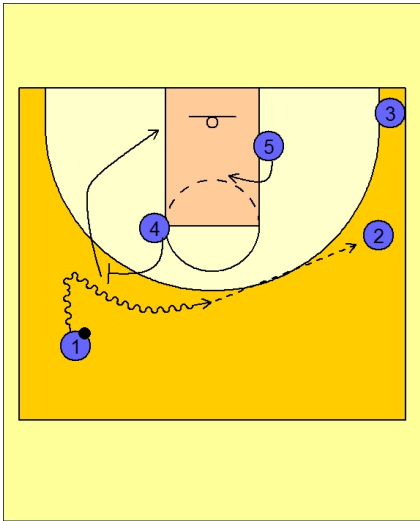




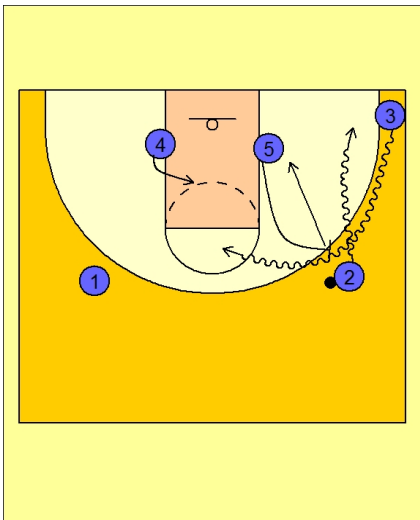
### Set play vs. man (25)



#### Ohio State Set Play vs. Man Defense

#4 sets a pick and roll for #1.

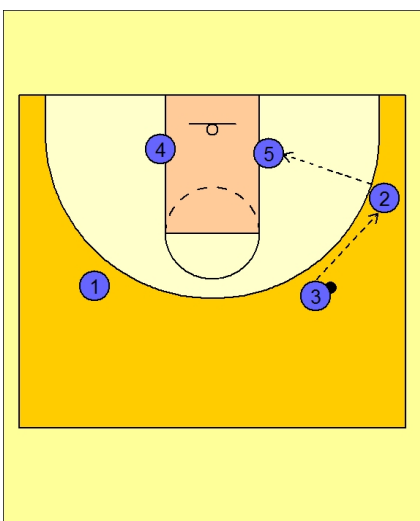
#5 ducks in hard. If #1 cannot get into the lane kicks it to #2.



#### Ohio State Set Play vs. Man Defense

#2 and #3 execute a dribble hand-off in the corner.

#5 sets a pick and roll for #3 as #4 ducks in hard.



#### Ohio State Set Play vs. Man Defense

#3 looks to throwback to #2 who feeds the post. #5 is isolated with players cutting around the perimeter.