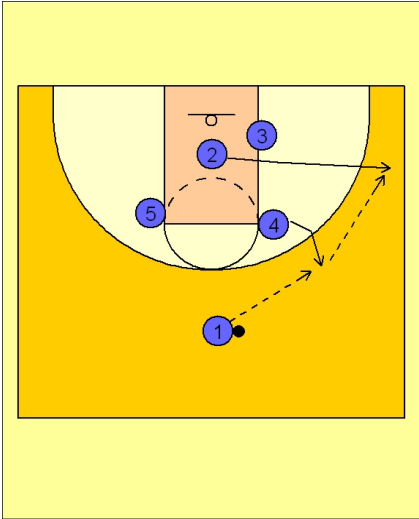


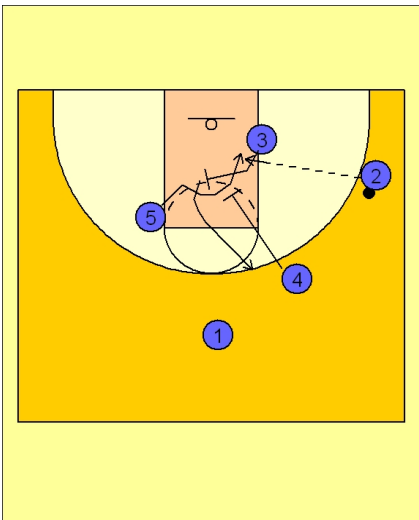


Set play vs. man (4)



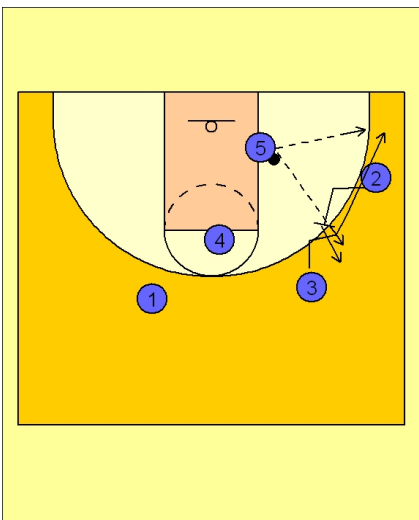
Ohio State Set Play vs. Man Defense

#4 steps out to receive the entry pass from #1 while #2 cuts to the right wing to receive the next pass from #4.



Ohio State Set Play vs. Man Defense

Once #2 has the ball, #3 sets a diagonal back screen for #5 who cuts to the ball side low block. After screening, #3 uses a down screen from #4 to pop to the top of the key area. The goal of this play is to get the ball into the post. We have not seen any other options when this play is used.



Ohio State Set Play vs. Man Defense

Once #5 has the ball on the block, #2 screens away for #3 who breaks to the ball side corner area. #2 pops out to the ball side wing area after screening for #3. #5 looks to score himself or pass out to either #3 or #2.