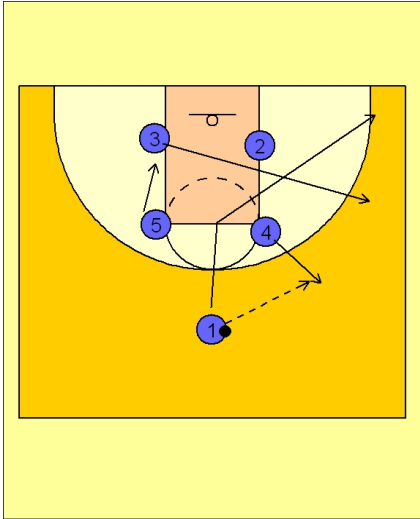




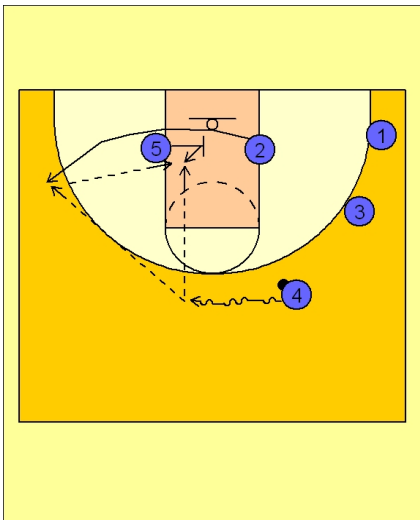
Set play vs. man (5)



Ohio State Set Play vs. Man Defense

Familiar box set to begin for Ohio State.

#4 steps out to receive the entry pass from #1. #1 cuts to the ball side corner while #3 cuts out to ball side wing. #5 slides down to the block away from the ball.



Ohio State Set Play vs. Man Defense

Once #1 and #3 have reached their positions, #4 takes the ball on the dribble across the top looking for #2 breaking to the left wing area off a screen in the lane from #5.

#4 can look to dump the ball straight down into #5 who has screened and sealed for the ball inside, or, #4 can look to hit #2 on the right wing (who may be open for a shot) and #2 can look to feed the post man #5.