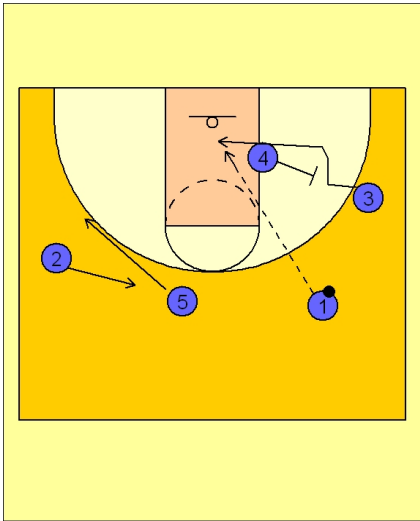




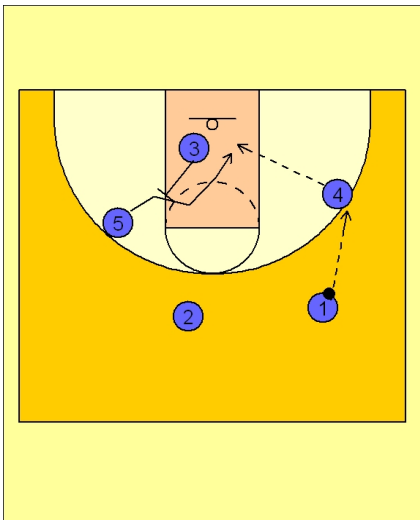
### Set play vs. man (8)



#### Ohio State Set Play vs. Man Defense

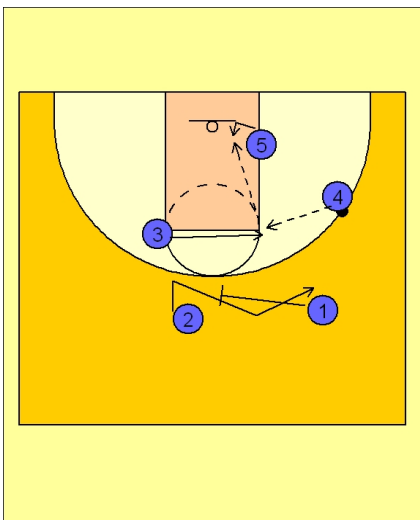
#4 starts the play by stepping out and back screening for #3 on the right wing. #3 cuts to the basket off the back screen. #1 looks to make the entry pass to #3 inside.

#5 and #2 exchange spots away from the ball.



#### Ohio State Set Play vs. Man Defense

#1 passes to #4 on the right wing. #3 now sets a diagonal back screen for #5. #4 looks to enter the ball in the post to #5.



#### Ohio State Set Play vs. Man Defense

If #5 is fronted, #3 flashes to the high post area looking to receive the pass from #4 and then to make the high / low entry pass to #5 down low. #1 and #2 either exchange on the perimeter or screen away for each other as this action is taking place.