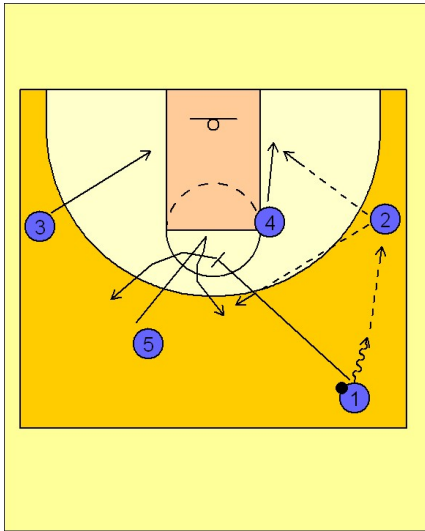


# Oklahoma

## Early offense (1)

1

### Oklahoma Early Offense



(#1) brings it up the sideline and enters to (#2).

(#1) cuts through to the high post area and sets a screen for (#5) who has also ran to the top of the key area to receive the screen from (#1).

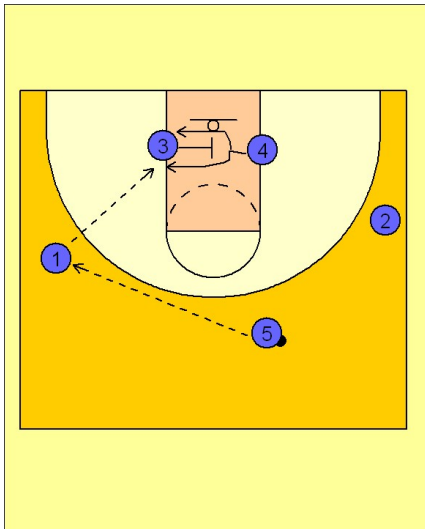
(#4) breaks to the ball side block when the ball is passed to (#2). (#2) can look to dump it inside right away if the direct pass or lob opportunity presents itself.

After (#1) screens for (#5) he breaks out to the opposite top side. (#2) reverses the ball to (#5).

On the reversal pass to (#5), (#3) runs down to the block.

2

### Oklahoma Early Offense



When (#5) reverses the ball to (#1), (#3) sets a cross screen in the middle of the lane for (#4) coming to ball side block for the post up.

Oklahoma will usually run motion offense from here.