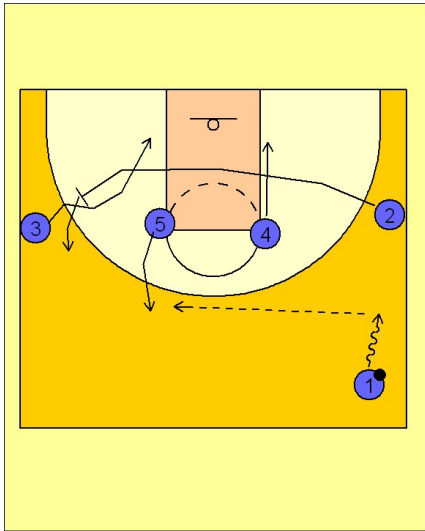


Oklahoma

Early offense (2)

1

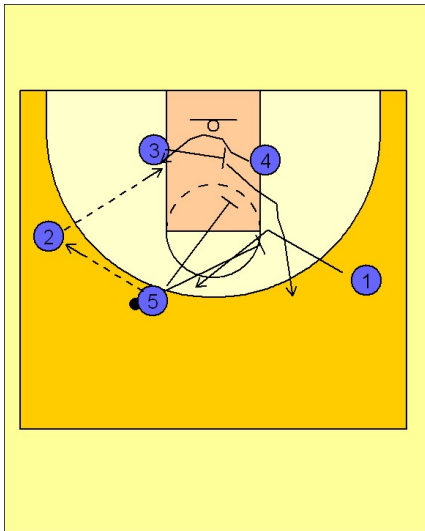
Oklahoma Early Offense



(#1) brings the ball up the sideline and reverses the ball to (#5).
 ((#4) moves down to the block.
 (#2) moves across the lane and sets a pick for (#3) to move him down to the block.

2

Oklahoma Early Offense



(#5) passes to (#2) on the wing.
 (#3) screens across for (#4) for the post up.
 After passing to (#2), (#5) has the option to screen away for (#1) or down screen for (#3).
 (#1) fakes down and pops out to the top of the key.