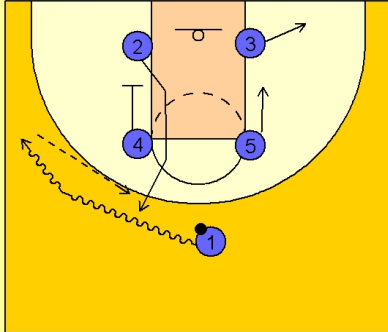




Oklahoma box continuity off



Oklahoma Box Continuity Offense (A)

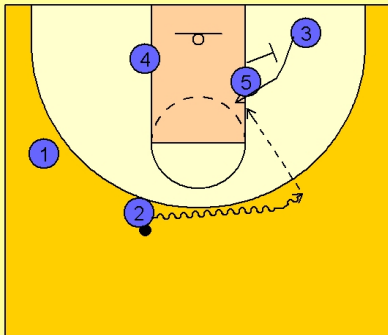
Box set to begin.

#1 picks a side with the ball.

As #1 brings the ball to the left wing, #4 sets a down screen for #2.

#3 on the opposite side low block is stepping to the short corner area while #5 moves down to about the midlane area.

#1 enters the ball to #2 on top.

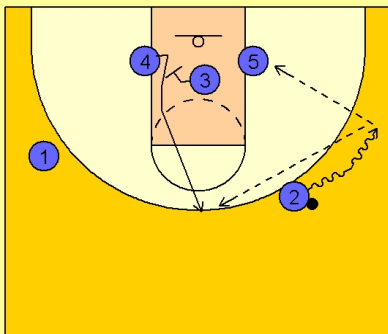


Oklahoma Box Continuity Offense (B)

On the catch, #2 will take the ball over to the right side of the floor. As he is doing this, #5 is screening for #3 in the short corner area.

Scoring Option #1:

#2 looks inside to #3 cutting over the top of #5's screen.



Oklahoma Box Continuity Offense (C)

If #3 is not open, #2 continues his dribble to the right wing.

Scoring Option #2:

#2 looks inside to #5 posting on the low block.

If #5 is not open, #3 is continuing his cut through the lane and sets a screen for #4.

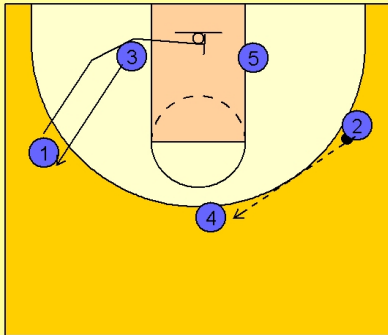
#4 breaks up to the top of the key area.



Oklahoma Box Continuity Offense (D)

On the flight of the ball from #2 to #4 on top, #1 on the left wing is cutting down underneath and across the lane to set a screen for #5.

#3, again on the flight of the ball from #2 to #4, is breaking out to the left wing area.

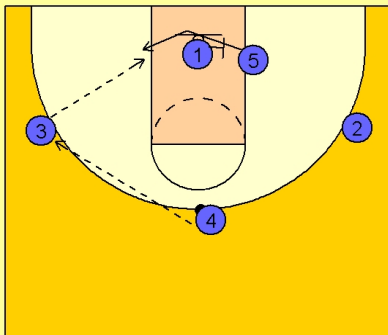


Oklahoma Box Continuity Offense (E)

#4 reverses the ball to #3 on the left wing.

Scoring Option #3:

#3 looks inside to #5 coming off the screen from #1.

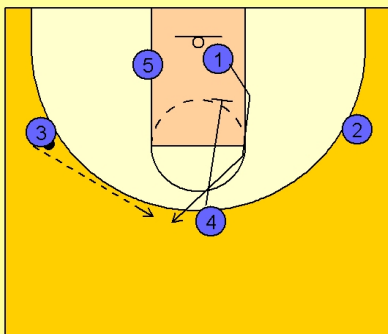


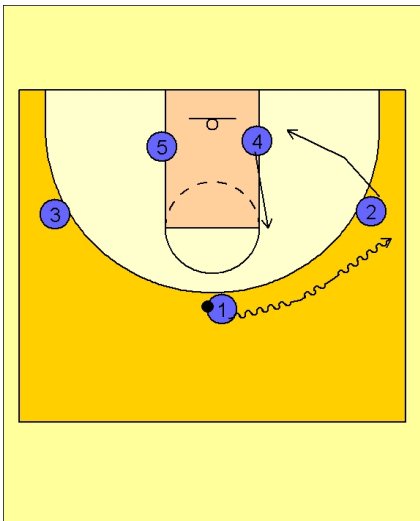
Oklahoma Box Continuity Offense (F)

If #5 is not open on the low block, #4 will set a "pick the picker" screen for #1.

Scoring Option #4:

#3 will then look for #1 breaking to the top for the open jump shot.



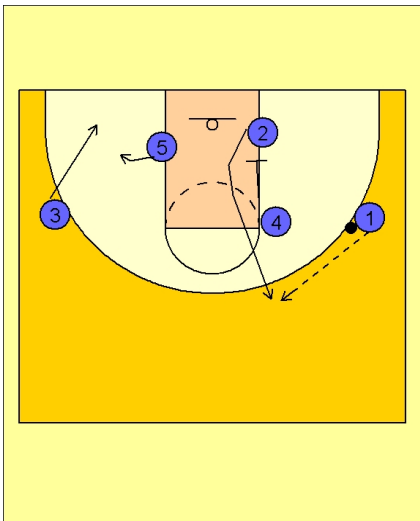


Oklahoma Box Continuity Offense (G)

If #1 does not have the shot, the offense continues, hence the "continuity".

#1 takes the ball on the dribble to the right wing area.

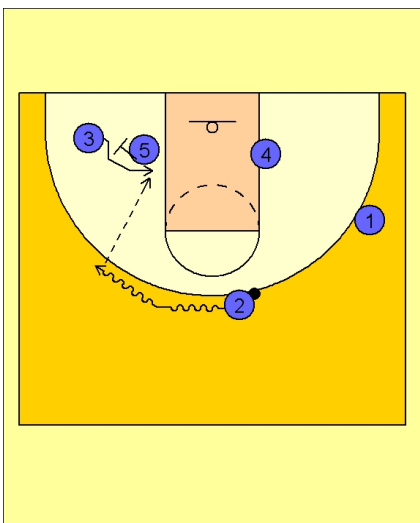
As this is happening, #4 moves up the lane while #2 breaks down to the low block.



Oklahoma Box Continuity Offense (H)

#4 sets a down screen for #2 and #1 enters the ball to #2 on top.

As this action is taking place, as in the beginning, #3 is moving to the short corner area while #5 is moving out to set up the screening action.



Oklahoma Box Continuity Offense (I)

On the catch, #2 takes the ball over to the left wing now and looks for the first scoring option with #3 cutting over the top of #5.

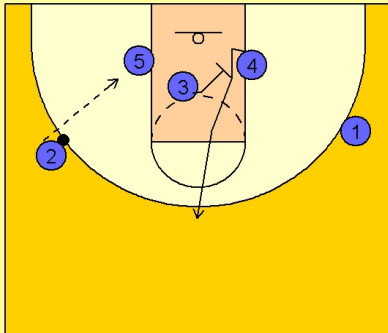


Oklahoma Box Continuity Offense (J)

If #3 is not open, #2 continues his dribble to the left wing and will look to post up #5.

#3 continues his movement across the lane and sets a screen for #4.

#4 breaks to the top of the key area.

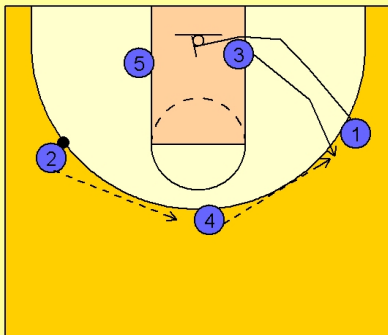


Oklahoma Box Continuity Offense (K)

If #5 is not open, #2 reverses the ball to #4 on top.

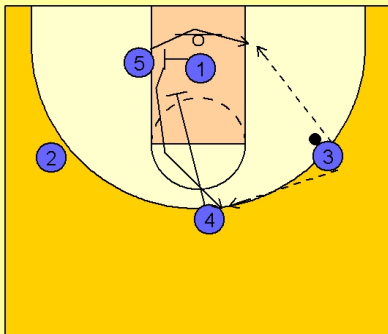
On the flight of the ball from #2 to #4, #1 is sprinting down and into the lane to set a screen for #5 while #3 is breaking out to the right wing area.

#4 reverses the ball to #3 on the right wing.



Oklahoma Box Continuity Offense (L)

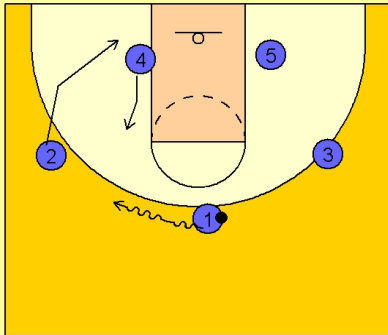
Once #3 has the ball, he is looking inside to #5 and also #1 breaking up to the top off the down screen (pick the picker action) from #4.





Oklahoma Box Continuity Offense (M)

If #1 did not have the shot, he would take the ball to the left side of the floor and the continuity action would begin all over again.

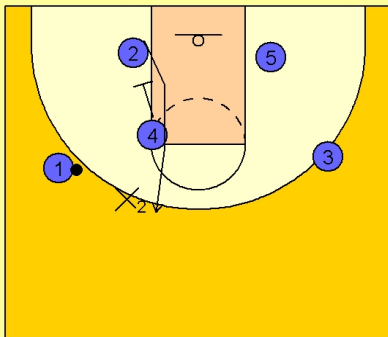


Oklahoma Box Continuity Offense (N)

Oklahoma has an adjustment in place when the guard on the initial entry is denied the ball.

Here we see #4 down screening for #2. X2 gets through the screen and denies the ball to #2.

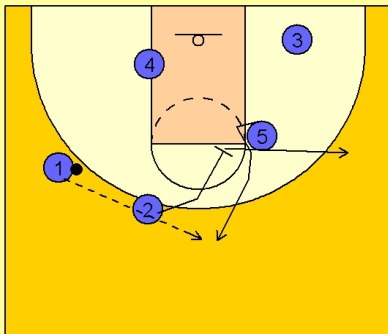
When the players and staff recognize this situation, they call it "quick".



Oklahoma Box Continuity Offense (O)

#2 will read the denial and quickly turn and set a down screen for #5.

#5 will break to the top to receive the pass from #1. #2, after down screening for #5, will break to the right wing area.



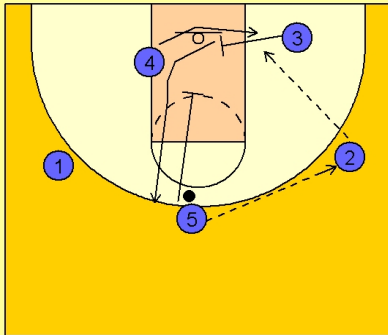


Oklahoma Box Continuity Offense (P)

#5 now reverses the ball to #2 on the right wing.

#3 normally has the screen first from #5, but since they are in "quick", #3 will cut into the lane and set the screen for #4.

#2 will look inside to #4 or to #3 breaking to the top off of the "pick the picker" action and down screen from #5.



Oklahoma Box Continuity Offense (Q)

The offense is now centered and can begin again normally on the dribble, with #3 bringing the ball over to the left wing while #5 and #1 begin to set up the down screen entry action.

