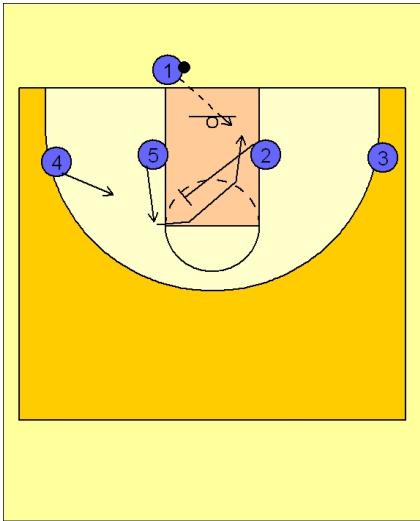




Ob under vs. man (12)



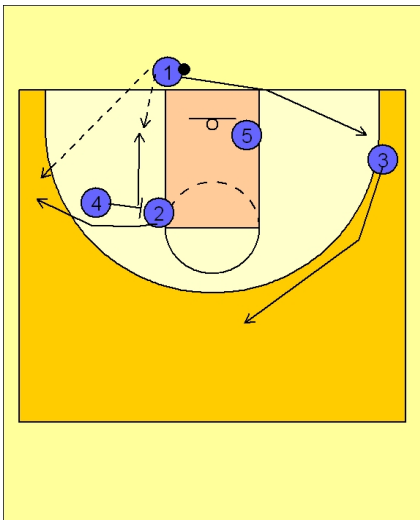
Oklahoma OB Under vs. Man

1 - 4 across the midlane level.

Play starts with #5 stepping back to receive the pop pass from #1.

As #5 cuts back, #2 steps up and sets a diagonal backscreen on #5 who cuts to the basket.

As this action is taking place, #4 starts to move in towards the elbow area.



Oklahoma OB Under vs. Man

If #5 does not receive the ball, #4 now screens the screener and sets a pick for #2.

As #2 pops out to the left wing, #4 cuts to the basket. #1 either passes to #2 or #4 and cuts in opposite the ball.

#3 moves up to the top and Indiana runs their motion offense or a set play.