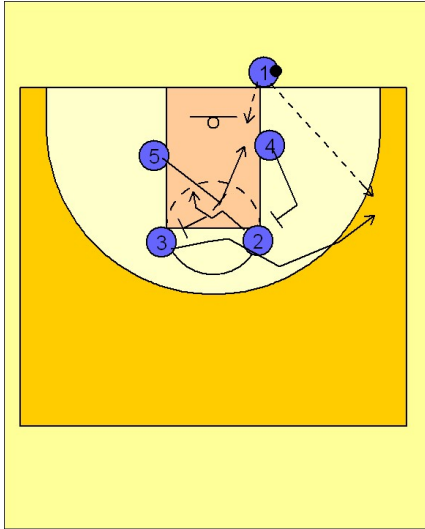


Oklahoma

Ob under vs. man (1)

1



Oklahoma OB Under vs. Man

Box set to start.

(#5) sets a diagonal back screen for (#2).

(#2) may use the screen and break to the basket, depending on how he is being played. He may also rub off the screen and set a screen for (#3) who is breaking to the wing off another screen from (#4).

After (#5) screens he rolls to the open ball side block area for an entry pass and score. (#3) may be open for a shot as well.

Oklahoma will back it out and run offense from here.