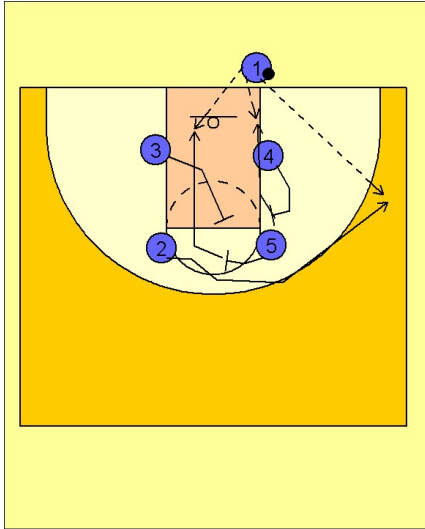


Oklahoma

Ob under vs. man (10)

1



Oklahoma OB Under vs. Man

Box set to start.

Play starts with #2 coming off a double screen from #4 and #5, trying to get open on the right wing for a shot.

As #2 comes off the double screen, #5 is cutting to the basket off of a backscreen from #3.

#4 will roll to the basket after #5 cuts to the backside of the lane.

#1 has three inbound options in order they were described.