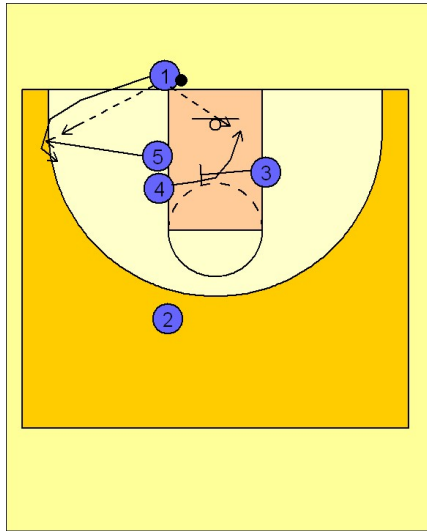


Oklahoma

Ob under vs. man (5)



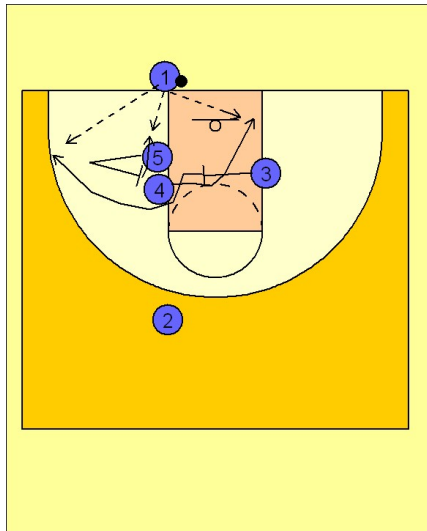
Oklahoma OB Under vs. Man Defense

#3 starts across and sets a screen for #4 who cuts to the opposite block looking for the quick hitting entry pass from #1.

#5 breaks just after #4 to the ball side corner.

If #4 is not open, #1 hits #5 in the corner with the ball and then cuts out behind #5 to get a hand off and a potential quick shot or penetration opportunity.

1



Oklahoma OB Under vs. Man Defense

Another option off of this play that Oklahoma will use is to have #4 come off the screen like before, but this time #5 will fake going out to the corner and will come back in to set a screen for #3 who will break to the ball side corner looking for the entry pass and shot.

#5, after screening for #3, will step towards the ball looking for the post entry pass on the block.

2