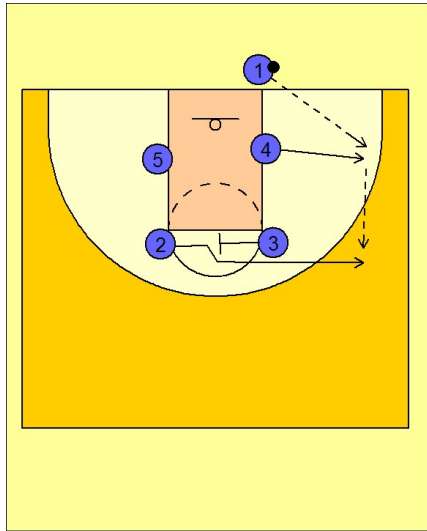


Oklahoma

Ob under vs. man (7)

1

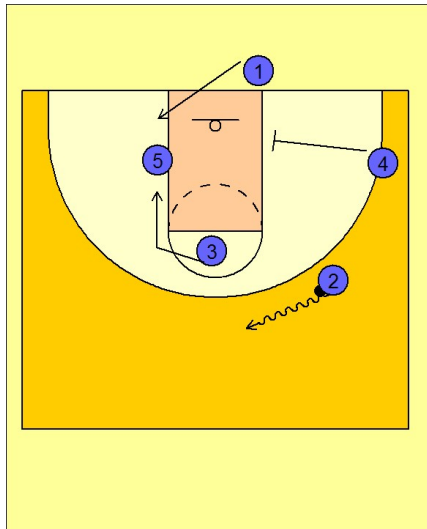


Oklahoma OB Under vs. Man Defense

Box set to begin.

#4 breaks out to the ball side corner to receive the entry pass from #1.
#3 screens across bringing #2 to the ball side wing area to receive the next pass from #4.

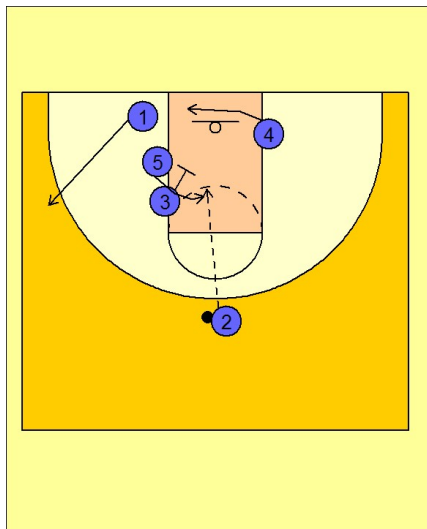
2



Oklahoma OB Under vs. Man Defense

Once #2 has the ball, #3 moves down to set up a double screen with #5 and #4 moves in to set a single screen. These actions give the impression you are setting up the usual "double pick one side single pick on the other for #1".

3



Oklahoma OB Under vs. Man Defense

What Oklahoma does look for is something completely different and a great option.

#1 breaks out to the left wing as #3 pins / screens down while #5 steps over the top for an open post feed in the middle from #2. #4 moves underneath the basket to give #5 more room to operate.