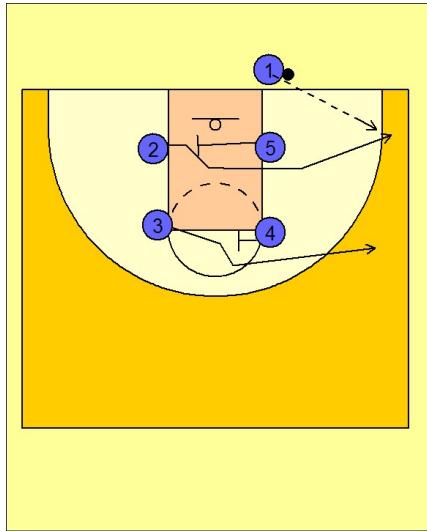


Oklahoma

Ob under vs. man (8)

1

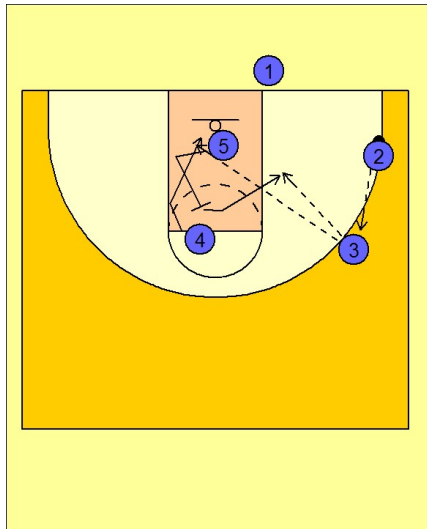


Oklahoma OB Under vs. Man Defense

Box set to begin.

#5 screens across the lane for #2 who breaks out to the ball side corner. #4 screens for #3 bringing him to the ball side wing. The ball is entered to #2 in the right corner.

2



Oklahoma OB Under vs. Man Defense

#2 then passes to #3 on the right wing. Once #3 has the ball, #5 back screens for #4. #3 first looks for #4 going to the basket and then looks for #5 stepping towards the ball side block looking for the post entry pass.