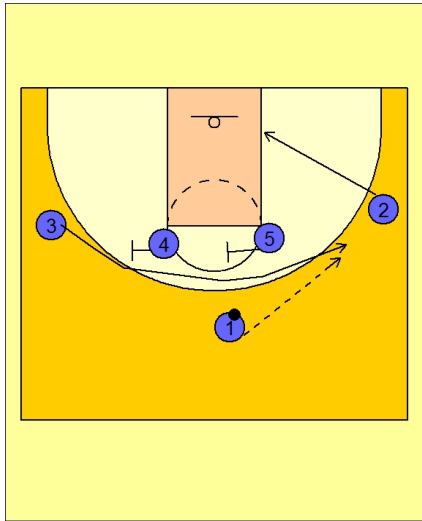




## Set play (22)



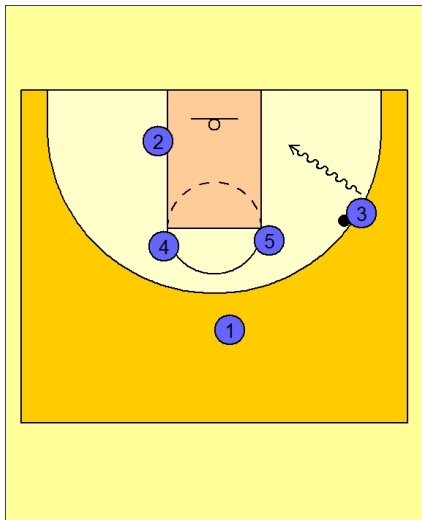
### Oklahoma Set Play vs. Man Defense

1 - 4 high to begin.

#2 cuts down to the right low block while #4 and #5 set a double staggered screen across for #3.

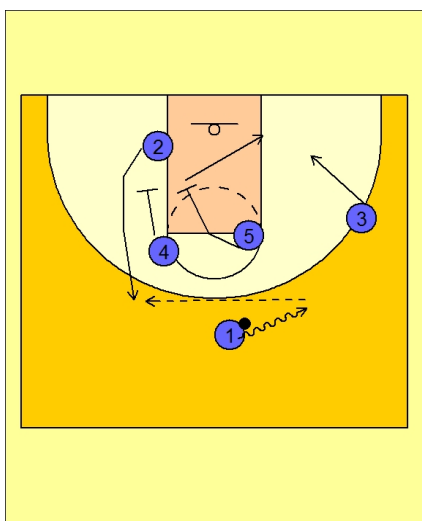
#3 cuts over the top of the screens to the right wing.

#1 may hit #3 on this first action.



### Oklahoma Set Play vs. Man Defense

If #3 does get the ball, #2 kept his movement down and across the lane, giving #3 a cleared out lane to put it down and attack the basket.



### Oklahoma Set Play vs. Man Defense

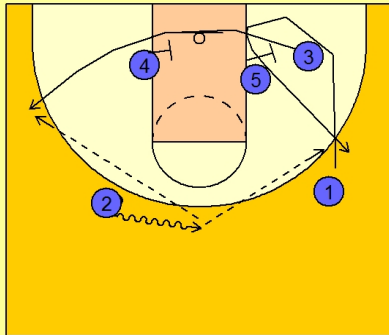
If #3 does not receive the ball, #2 now comes off the double downscreen from #4 and #5.

#1 looks to hit #2 breaking up the top of the double screen.

After screening, #4 stays on the left low block while #5 cuts across to the right low block. #3 begins to cut down to the right low block.



### Oklahoma Set Play vs. Man Defense



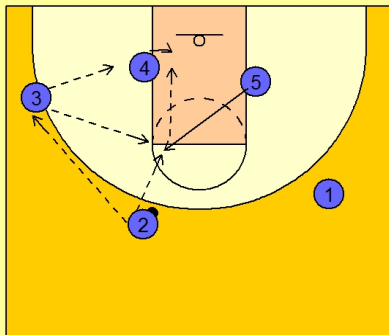
If #2 does not have a shot, he will center the ball on the dribble while #1 cuts down under both #3 and #5 on the right low block.

#1 cuts up either around both #3 and #5 or between the two and back up to the right wing.

As #1 cuts up, #3 gets a backscreen from #5 and cuts across the lane also getting a screen on the left low block.

#2 looks to hit either #3 on the left wing or #1 on the right wing.

### Oklahoma Set Play vs. Man Defense



Depending on the wing that receives the ball, the opposite post will flash to the high post and create a triangle on that side of the floor.

#3 or #2 will look to feed either the low or high post.