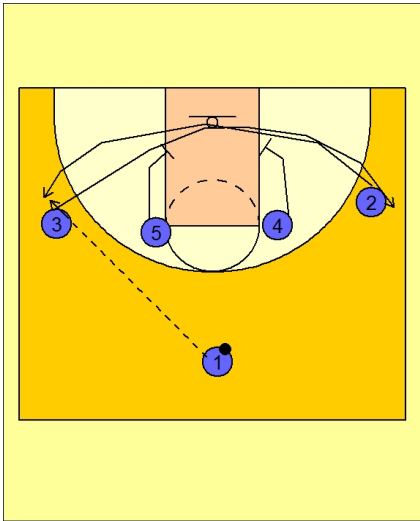




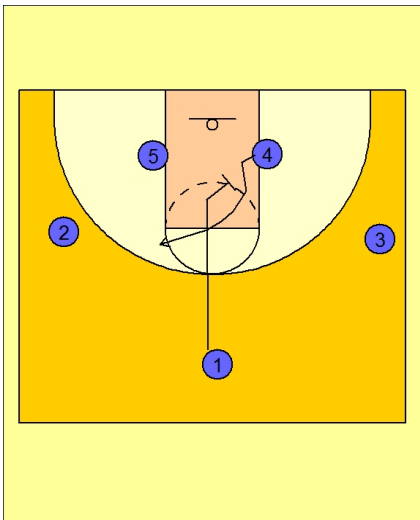
### Set play (23)



#### Oklahoma Set Play vs. Man Defense

#2 and #3 cross out under the basket using screens on the blocks from #4 and #5.

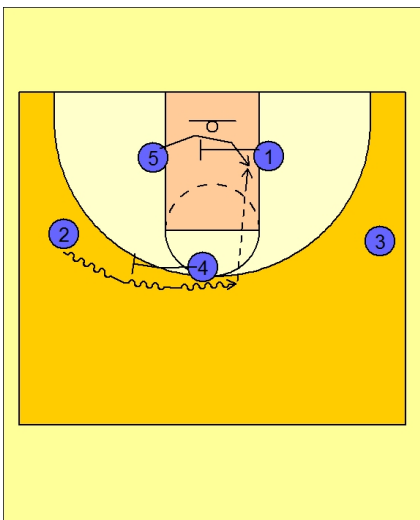
#1 can enter to either wing. In this diagram, #1 passes to #2 on the left wing.



#### Oklahoma Set Play vs. Man Defense

As soon as #1 passes to #2, #1 will set a down screen in the lane for #4.

#4 breaks up to the ball side FT line elbow area.



#### Oklahoma Set Play vs. Man Defense

#4 continues his cut towards the ball and sets a ball screen on #2's defender.

As #2 comes off the ball screen from #4, #1 screens in the lane for #5.

#2 looks to pass inside to #5.



**Oklahoma Set Play vs. Man Defense**

If #5 is not open, #4 "picks the picker" and down screens for #1, trying to free him for the open jumper on top.

