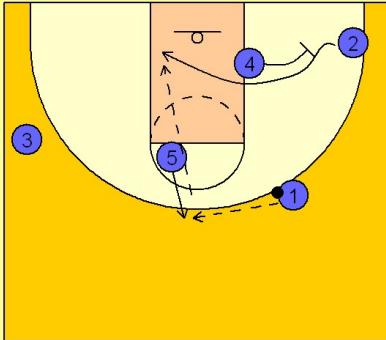


Oklahoma Set play (11)

1

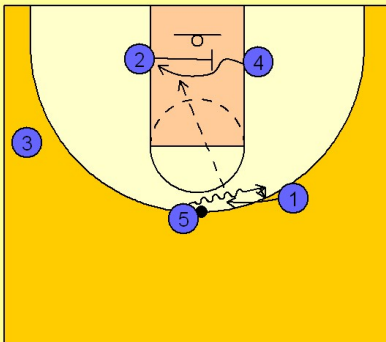
Oklahoma Set Play vs. Man Defense



To start the play, #5 steps out and receives the pass from #1. As #5 catches the ball, #4 steps out and back screens for #2 in the right corner area. #5 will look for #2 coming over the top of the screen set by #4.

2

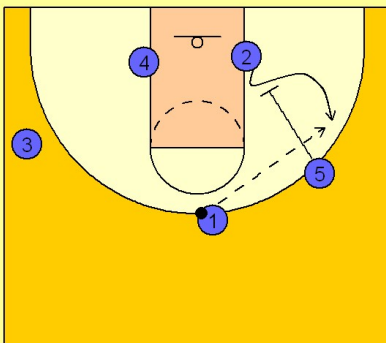
Oklahoma Set Play vs. Man Defense



#5 then dribbles at #1 to execute the dribble hand off. While this is happening, #2 back screens for #4. If #1 gets the hand off from #5, he will look inside to #4 coming off the screen from #2.

3

Oklahoma Set Play vs. Man Defense

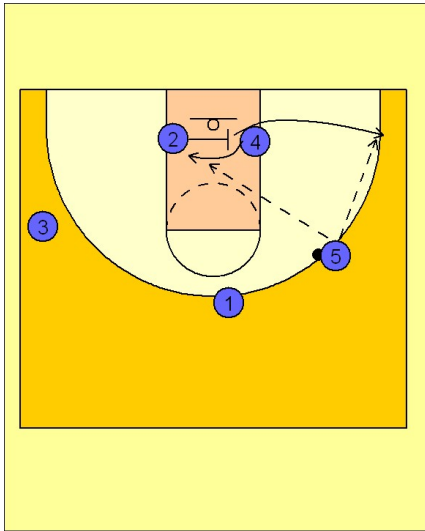


If #4 is not open, #5 quickly moves down after the hand off to #1 to set a down screen for #2. #1 looks to hit #2 for the perimeter jumper on the right side.

Oklahoma Set play (11)

4

Oklahoma Set Play vs. Man Defense



If #5 does not give the ball to #1 on the hand off, #5 will look inside for #2 back screening for #4. After screening, #2 will break out to the right wing for the perimeter jumper.